

# Přílohy

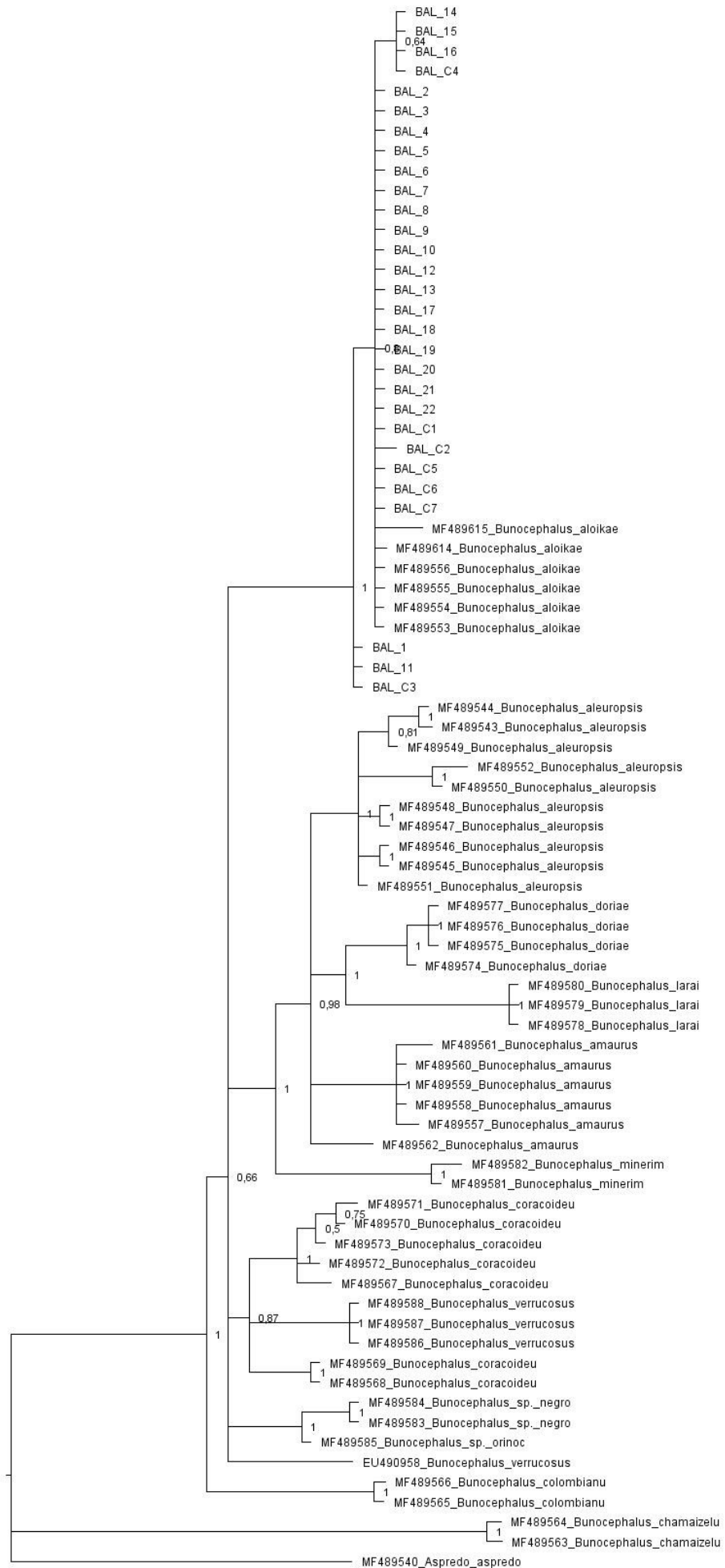
Sekvence 18S rDNA z vybraného klonu *N. guentheri* (nekompletní na 5' i 3' konci):

```
>Nothobranchius_guentheri_rDNA_18S
TCCGAGGACCTCACTAAACCATCCAATCGGTAGTAGCGACGGGCGGTGTGTACAAAGGGCAGGGACTT
AATCGACGCGAGCTTATGACCCGCGCTTACTGGGAACTCCTCGTTGATGGGAAATAATTGCAATCCCC
AATCCCTATCACGAGTGGGGTTCAGCGGGTTACCCACGCCTCTCGGCGAAGGGTAGACACACGCTGAT
CCACTCAGTGTGGCGCGCGTGCAGCCCCGGACATCTAAGGGCATCACAGACCTGTTATTGCTCAATCT
CGTGTGGCTGAACGCCACTTGTCCCTCTAAGAAGTTGGACGCCGACCGCACGGGGCCGCGTAACTAGT
TAGCATGCCGGAGTCTCGTTCGTTATCGGAATTAACCAGACAAATCGCTCCACCAACTAAGAACGGCC
ATGCACCACCACCCACAGAATCGAGAAAGAGCTATCAATCTGTCAATCCTTCCGTGTCCGGGCCGGG
TGAGGTTTCCCGTGTGAGTCAAATTAAGCCGCAGGCTCCACTCCTGGTGGTGCCCTTCCGTCAATTC
CTTTAAGTTTCAGCTTTGCAACCATACTCCCCCGGAACCCAAAGACTTTGGTTTCCCGGACGCTGCC
CGGCGGGTCATGGGAATAACGCCGCGGATCGCTAGTTGGCATCGTTTATGGTCGGAACACTACGACGGT
ATCTGATCGTCTTCGAACCTCCGACTTTCGTTCTTGATTAATGAAAACATTCCTTGGCAAATGCTTTCG
CTTTCGTCCGTCTTGCGCCGGTCCAAGAATTTACCTCTAGCGGCACAATACGAATGCCCCGGCCGT
CCCTCTTAATCATGGCCCCAGTTCAGAGAAAAACCCACAAAATAGAACCGGAGTCCTATTCCATTATT
CCTAGCTGCGGTATTCAGGCGACCGGGCCTGCTTTGAACACTCTAATTTTTTCAAAGTAAACGCTTCG
GACCCGCGGGACACTCAGCTAAGAGCATCGAGGGGCGCCGAGAGGCAGGGCTGGGACAGACGGTAGCT
CGCCTCGCGGCGGACGTCAGCTCGATCCGAGATCCACTACAAGCTTTTACTGCACCACTTTAGATACG
CTATGGAAGTGAATACGCGGCTGCTGCCAAACTGCCCCAATAATCCCGTTAAGGATTAAAGGGAC
CCTTCCATTAAGGGCCCCAAGAATCCGTTTGTATTTTCTCCACCTCCAATCGGAATGGAATTGC
```

Tab. S1 (na následující straně) – Jedinci použítí při tvorbě fylogenetických stromů pro geny *COI* a *RAG1*

<b>Druh</b>	<b>Lokalita</b>	<b>COI</b>	<b>RAG1</b>	<b>Citace</b>
<i>Bunocephalus aleuropsis</i>	Brazil: Pará: rio Xingu, ca. 60 km below Altamira (Lower Amazon)	MF489396	MF489550	Carvalho et al. 2018
	Brazil: Pará: rio Itatá ca. 60 km SE of Altamira (Xingu)	MF489397	MF489552	
	Brazil: Mato Grosso: ribeirão Insula (Araguaia)	MF489406	MF489545	
		MF489407	MF489546	
	Brazil: Acre: rio Moá (Juruá)	MF489408	MF489547	
		MF489409	MF489548	
	Brazil: Rondônia (Madeira)	MF489410	MF489543	
		MF489411	MF489544	
Peru: Loreto: río Amazonas & río Tamshiyacu (Upper Amazon)	MF489412	MF489551		
	MF489413	MF489549		
<i>Bunocephalus aloikae</i>	Colombia: Meta: río Blanco (Guaviare)	MF489388	MF489615	Carvalho et al. 2018
	Venezuela: Guárico: río Apure (Apure)	MF489389	MF489553	
	Venezuela: río Arauca (Orinoco)	-	MF489556	
	Suriname: Para: Spari Kreek (Coppename)	MF489391	MF489614	
		MF489390	MF489554	
MF489392	MF489555			
<i>Bunocephalus aloikae</i>	BAL_1 - Official fish trade	BAL_1	BAL_1	Tato práce
	BAL_2 - OFT	BAL_2	BAL_2	
	BAL_3 - OFT	BAL_3	BAL_3	
	BAL_4 - OFT	BAL_4	BAL_4	
	BAL_5 - OFT	BAL_5	BAL_5	
	BAL_6 - OFT	BAL_6	BAL_6	
	BAL_7 - OFT	BAL_7	BAL_7	
	BAL_8 - OFT	BAL_8	BAL_8	
	BAL_9 - OFT	BAL_9	BAL_9	
	BAL_10 - OFT	BAL_10	BAL_10	
	BAL_11 - OFT	BAL_11	BAL_11	
	BAL_12 - OFT	BAL_12	BAL_12	
	BAL_13 - OFT	BAL_13	BAL_13	
	BAL_14 - OFT	BAL_14	BAL_14	
	BAL_15 - OFT	BAL_15	BAL_15	
	BAL_16 - OFT	BAL_16	BAL_16	
	BAL_17 - OFT	BAL_17	BAL_17	
	BAL_18 - OFT	BAL_18	BAL_18	
	BAL_19 - OFT	BAL_19	BAL_19	
	BAL_20 - OFT	BAL_20	BAL_20	
	BAL_21 - OFT	BAL_21	BAL_21	
	BAL_22 - OFT	BAL_22	BAL_22	
	BAL_C1 - OFT	BAL_C1	BAL_C1	
	BAL_C2 - OFT	BAL_C2	BAL_C2	
	BAL_C3 - OFT	BAL_C3	BAL_C3	
	BAL_C4 - OFT	BAL_C4	BAL_C4	
	BAL_C5 - OFT	BAL_C5	BAL_C5	
BAL_C6 - OFT	BAL_C6	BAL_C6		
BAL_C7 - OFT	BAL_C7	BAL_C7		
<i>Bunocephalus amaurus</i>	Guyana: Rupununi: Yuora River (Branco)	MF489405	MF489562	Carvalho et al. 2018
	Suriname: Sipaliwini: Lawa River (Marowijne)	MF489400	MF489561	
	French Guiana: Mana: Crique Aya (Mana)	MF489401	MF489557	
		MF489402	MF489558	
		MF489403	MF489559	
MF489404	MF489560			
<i>Bunocephalus amaurus</i>	Brazil: rio Guamá	MF416200	N/A	Ferreira et al. 2020
		MF416202	N/A	
<i>"Bunocephalus"</i>		MF489431	MF489563	

<i>chamaizelus</i>	Guyana: Potaro-Siparuni: Kuribrong River (Essequibo)	MF489432	MF489564	Carvalho et al. 2018	
<i>Bunocephalus colombianus</i>	Colombia: Atrato (Atrato)	N/A	MF489565	Carvalho et al. 2018	
		N/A	MF489566		
<i>Bunocephalus coracoideus</i>	Peru: Loreto: caño Shirui NW of Iquitos (Upper Amazon)	MF489420	MF489570	Carvalho et al. 2018	
	Peru: Loreto: río Nanay (Upper Amazon)	MF489421	MF489571		
	Peru: Loreto: caño Shirui (Upper Amazon)	MF489419	MF489572		
	Peru: Loreto: río Itaya near Iquitos (Upper Amazon)	MF489422	N/A		
	Peru: Loreto: caño Shirui NW of Iquitos (Upper Amazon)	MF489423	MF489573		
	Brazil: Acre: rio Japiim (Juruá)	MF489417	N/A		
		MF489418	MF489567		
	Brazil: Amazonas: Igarapé Demuriari (Negro)	MF489425	MF489568		
		MF489424	MF489569		
	Brazil: rio Cuieiras	MF416164	N/A	Ferreira et al. 2017	
		MF416165	N/A		
	Brazil: rio Demini	MF416168	N/A		
		MF416169	N/A		
	Brazil: rio Guamá	MF416173	N/A		
MF416176		N/A			
Brazil: rio Purus	MF416184	N/A			
	MF416185	N/A			
<i>Bunocephalus doriae</i>	Brazil: Rio Grande do Sul: rio Inhacundá (Uruguay)	MF489393	MF489577		Carvalho et al. 2018
	Argentina: Corrientes: río Paraná & lower Guayquiraró (Paraná)	N/A	MF489574		
	Brazil: Rio Grande do Sul: rio Ijuí-Mirim (Uruguay)	N/A	MF489575		
	Brazil: Rio Grande do Sul: arroio Chanota (Uruguay)	N/A	MF489576		
	N/A	MF595228	N/A	Calegari et al. 2019	
<i>Bunocephalus larai</i>	Brazil: Minas Gerais: tributary to rio Paranaíba (Paraná)	N/A	MF489578	Carvalho et al. 2018	
		MF489394	MF489579		
		MF489395	MF489580		
<i>Bunocephalus minerim</i>	Brazil: Minas Gerais: creek at Unaí (São Francisco)	MF489398	MF489581		
		MF489399	MF489582		
<i>Bunocephalus verrucosus</i>	Guyana: Rupununi: Hassar pond (Essequibo)	MF489430	MF489586	Carvalho et al. 2018	
	Guyana, Rupununi: Rupununi River (Essequibo)	MF489428	MF489587		
	Brazil: Roraima: igarapé Jaburu (Branco)	MF489427	MF489588		
	Brazil: Amazonas: igarapé Zamula, (Negro)	MF489429	N/A		
	OFT	EU490846	EU490958	Sullivan et al. 2008	
<i>Bunocephalus</i> sp. Orinoco	Venezuela: Amazonas: río Iguapo (Orinoco)	MF489414	MF489585	Carvalho et al. 2018	
<i>Bunocephalus</i> sp. Negro	Brazil: Amazonas: rio Negro (Amazon)	MF489416	MF489584	Carvalho et al. 2018	
		MF489415	MF489583		
<i>Bunocephalus</i> cf. <i>aloikae</i>	Rio Curicuriari, Igarape Bucu, Sao Gabriel da Cachoeira, AM	MF416162	N/A	Ferreira et al. 2020	
		MF416163	N/A		
Outgroup					
<i>Aspredo aspredo</i>	French Guiana: Roura: Kaw River (Atlantic)	MF489355	MF489540	Carvalho et al. 2018	



0.003

Obr. S1 Fylogenetický strom sestrojený pomocí Bayesovské metody na základě sekvencí jaderného genu RAG1. Jako outgroup byla použita sekvence druhu *Aspredo aspredo*. Sekvence začínající písmeny BAL byly sekvenovány pro účely této práce, ostatní sekvence byly staženy z GenBank.

Obr. S2 (na následující straně): Fylogenetický strom sestrojený pomocí Bayesovské metody na základě sekvencí mitochondriálního genu COI. Jako outgroup byla použita sekvence druhu *Aspredo aspredo*. Sekvence začínající písmeny BAL byly sekvenovány pro účely této práce, ostatní sekvence byly staženy z GenBank.

