

## Seznam obrazových příloh

1. Ashley Havinden, návrh plakátu pro výstavu *Britain Can Make It*, 1946 - <https://vanda-production-assets.s3.amazonaws.com/2018/04/17/15/16/01/66320a41-f8c9-4bf6-8993-99ddb4988a83/2006AN8490-britain-can-make-it-poster-960.jpg>, vyhledáno 30.7.2023
2. Pohled na nábřeží *South Bank* s výstavištěm *Festival of Britain*, 1951 - [https://www.thehistorypress.co.uk/media/3498/11338105144\\_dce811ce14\\_b.jpg?crop=0.14125862526539276,0,0.033203954352441695,0&quality=98&rnd=131383098550000000&width=750&cropmode=percentage](https://www.thehistorypress.co.uk/media/3498/11338105144_dce811ce14_b.jpg?crop=0.14125862526539276,0,0.033203954352441695,0&quality=98&rnd=131383098550000000&width=750&cropmode=percentage), vyhledáno 30.7.2023
3. Plánek nábřeží *South Bank* s výstavištěm *Festival of Britain* z průvodce *The South Bank Exhibition: A Guide to the Story it Tells* od Iana Herberta Coxe, 1951 - [https://www.nationalarchives.gov.uk/wp-content/uploads/2019/03/ZLIB-17\\_129A\\_1951-Festival-of-Britain.jpg](https://www.nationalarchives.gov.uk/wp-content/uploads/2019/03/ZLIB-17_129A_1951-Festival-of-Britain.jpg), vyhledáno 30.7.2023
4. Pohled na počátek okruhu *The People* se srpovitým objektem H. T. Cadbury-Browna, 1951 - [https://www.ribapix.com/images/thumbs/040/0409676\\_RIBA59051\\_600.jpeg](https://www.ribapix.com/images/thumbs/040/0409676_RIBA59051_600.jpeg), vyhledáno 30.7.2023
5. Graham Sutherland, *The Origins of the Land*, pavilon The Land of Britain, 1951 - [https://media.tate.org.uk/art/images/work/N/N06/N06085\\_10.jpg](https://media.tate.org.uk/art/images/work/N/N06/N06085_10.jpg), vyhledáno 30.7.2023
6. Brian O'Rorke a Frederik Henrion, severní fasáda pavilonu *The Country*, 1951 - [https://www.ribapix.com/images/thumbs/036/0364239\\_RIBA19345\\_600.jpeg](https://www.ribapix.com/images/thumbs/036/0364239_RIBA19345_600.jpeg), vyhledáno 30.7.2023
7. Michael O'Connell, tapisérie v pavilonu *The Country*, 1951 - <https://seamusocconnell.files.wordpress.com/2022/03/fob-hanging-in-situ-2.jpg>, vyhledáno 30.7.2023
8. Pavilon *Power and Production* s reliéfem *The Industries: Light, Heavy, Electricity* od Karla Vogela, 1950-1951 - <https://alondoninheritance.com/wp-content/uploads/2016/07/Festival-of-Britain-7.jpg>, vyhledáno 30.7.2023
9. *The 51 Bar* se sochou *Youth* od Daphne Hardy Henrion, 1951 - [https://www.ribapix.com/images/thumbs/036/0365783\\_RIBA2473-6\\_600.jpeg](https://www.ribapix.com/images/thumbs/036/0365783_RIBA2473-6_600.jpeg), vyhledáno 30.7.2023
10. Jižní stranu pavilonu *Sea and Ships*, 1951 - [https://www.ribapix.com/images/thumbs/040/0407341\\_RIBA3683-73\\_600.jpeg](https://www.ribapix.com/images/thumbs/040/0407341_RIBA3683-73_600.jpeg), vyhledáno 30.7.2023

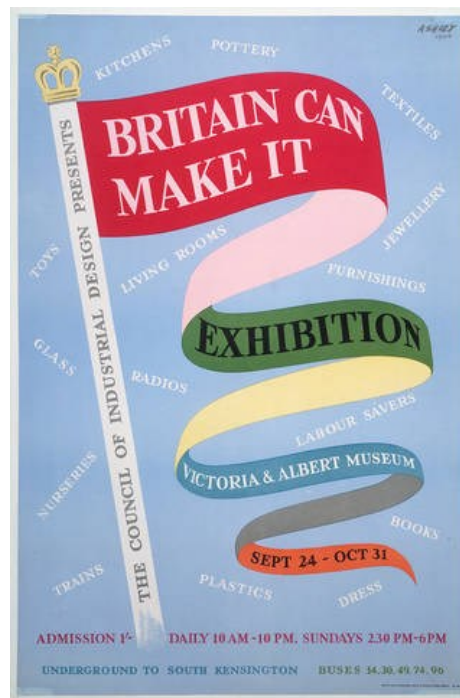
11. Siegfried Charoux, *The Islanders*, 1949-1951 -  
[https://www.telegraph.co.uk/multimedia/archive/01871/19510528-sculpture\\_1871839i.jpg?imwidth=680](https://www.telegraph.co.uk/multimedia/archive/01871/19510528-sculpture_1871839i.jpg?imwidth=680), vyhledáno 30.7.2023
12. Hidalgo Moya a Philip Powell, *Skylon*, 1951 -  
[https://www.ribapix.com/images/thumbs/038/0380741\\_RIBA2706-17\\_600.jpeg](https://www.ribapix.com/images/thumbs/038/0380741_RIBA2706-17_600.jpeg),  
vyhledáno 30.7.2023
13. Západní průčelí pavilonu *Transport*, 1951 - <https://alondoninheritance.com/wp-content/uploads/2016/07/Festival-of-Britain-6.jpg>, vyhledáno 30.7.2023
14. Ralph Tubbs, *Dome of Discovery*, 1951 - <https://alchetron.com/cdn/dome-of-discovery-5a426de1-e701-4c1f-b817-65d65cb57a6-resize-750.jpeg>, vyhledáno 30.7.2023
15. *Regatta Restaurant* se sochou *Cypress* od Lynna Chadwicka, 1950-1951 -  
[https://www.ribapix.com/images/thumbs/040/0407413\\_RIBA5121\\_600.jpeg](https://www.ribapix.com/images/thumbs/040/0407413_RIBA5121_600.jpeg), vyhledáno  
30.7.2023
16. Wells Coates, severní fasáda *Telekinema*, 1951 -  
[https://www.ribapix.com/images/thumbs/036/0364256\\_RIBA19362\\_600.jpeg](https://www.ribapix.com/images/thumbs/036/0364256_RIBA19362_600.jpeg), vyhledáno  
30.7.2023
17. Richarda Drew Russell a Robert Goodden, jižní průčelí pavilonu *The Lion and The Unicorn*, 1951 - <https://cdn.nationalarchives.gov.uk/blog/wp-content/uploads/2021/05/24172846/pic-3-768x521.jpg>, vyhledáno 30.7.2023
18. Fred Mizen, ratanové sochy lva a jednorožce v pavilonu *The Lion and the Unicorn*, 1951 -  
<https://inexpensiveprogress.com/wp-content/uploads/2020/08/lionuni.jpg>, vyhledáno  
30.7.2023
19. Jacob Epstein, *Youth Advancing* před pavilonem *Homes and Gardens* s *Abacus Screen* od Edwarda Millse v pozadí, 1951 -  
[https://64.media.tumblr.com/66e68568b6e316167071d628f1e260c2/tumblr\\_mormobHDSR1qzzsdjo1\\_1280.jpg](https://64.media.tumblr.com/66e68568b6e316167071d628f1e260c2/tumblr_mormobHDSR1qzzsdjo1_1280.jpg), vyhledáno 30.7.2023
20. Západní fasáda pavilonu *Homes and Gardens* se sochou *Grace* od Johna Matthewse, 1951 -  
[https://lh3.googleusercontent.com/ci/AA1T9HK5sTHFvUTqPKs3ElJrwrmfDS539\\_UstONGRVbMq7mV0DCEDQtu6tlE1XEKqlpe\\_FyXEB\\_QVFuI=s1200](https://lh3.googleusercontent.com/ci/AA1T9HK5sTHFvUTqPKs3ElJrwrmfDS539_UstONGRVbMq7mV0DCEDQtu6tlE1XEKqlpe_FyXEB_QVFuI=s1200), vyhledáno  
30.7.2023
21. John Piper, *The Englishman's Home* na severní fasádě pavilonu *Homes and Gardens*, 1951 - <https://ianbeckblog.files.wordpress.com/2011/04/piper-mural-f-of-b.jpg>,  
vyhledáno 30.7.2023

22. Vstupní hala pavilonu *Homes and Gardens* se sochou *Sisters* od Johna Matthewse, 1951 - [https://www.ribapix.com/images/thumbs/036/0364265\\_RIBA19371\\_600.jpeg](https://www.ribapix.com/images/thumbs/036/0364265_RIBA19371_600.jpeg), vyhledáno 30.7.2023
23. Fry and Drew, vstup *Waterloo Bridge Gate* s pavilony *The New Schools* a *Health*, 1951 - <https://alondoninheritance.com/wp-content/uploads/2016/07/Festival-of-Britain-13.jpg>, vyhledáno 30.7.2023
24. Gordon a Ursula Bowyer, expozice *Sport*, 1951 - [https://www.ribapix.com/images/thumbs/038/0381472\\_RIBA7753\\_600.jpeg](https://www.ribapix.com/images/thumbs/038/0381472_RIBA7753_600.jpeg), vyhledáno 30.7.2023
25. Eric Brown a Peter Chamberlin, sekce *Seaside*, 1951 - <https://www.vads.ac.uk/digital/api/singleitem/image/DCA/9124/default.jpg>, vyhledáno 30.7.2023
26. Robert Matthew, Leslie Martin a Peter Moro, severní průčelí *Royal Festival Hall*, 1951 - [https://www.ribapix.com/images/thumbs/037/0379857\\_RIBA38474\\_600.jpeg](https://www.ribapix.com/images/thumbs/037/0379857_RIBA38474_600.jpeg), vyhledáno 30.7.2023
27. Robert Matthew, Leslie Martin a Peter Moro, jižní průčelí *Royal Festival Hall*, 1951 - <https://assets.classicfm.com/2015/40/southbank-centre-2-1444131807-view-0.jpg>, vyhledáno 30.7.2023
28. Fry and Drew, *Thameside Restaurant*, 1951 - [https://www.ribapix.com/images/thumbs/032/0323789\\_RIBA5117\\_600.jpeg](https://www.ribapix.com/images/thumbs/032/0323789_RIBA5117_600.jpeg), vyhledáno 30.7.2023
29. Ben Nicholson, malba pro *Thameside Restaurant* – bez názvu, 1951 - [https://media.tate.org.uk/art/images/work/T/T07/T07027\\_10.jpg](https://media.tate.org.uk/art/images/work/T/T07/T07027_10.jpg), vyhledáno 30.7.2023
30. Reg Butler, *Bird Cage*, 1950-51 - <https://sothebys-com.brightspotcdn.com/dims4/default/8d2cd1b/2147483647/strip/true/crop/1494x2000+0+0/resize/717x960!/quality/90/?url=http%3A%2F%2Fsothebys-brightspot-migration.s3.amazonaws.com%2F3e%2F08%2F09%2Fbce77d07675c9b8ca7d7cf8fb5b09e42ecee5a573676a9974e4b103116%2Fcentury-of-british-art-slideshow-8.jpg>, vyhledáno 30.7.2023
31. Barbara Hepworth, *Turning Forms*, 1950-1951 - <https://lh3.googleusercontent.com/ci/AA1T9HIKcT1UBMeRrm5VijqWDHD-LY6Hb2BENYZaLA4bwwP2iQuaI3o5IpM4V-vwmbBZCSrr9DOnNps=s1200>, vyhledáno 30.7.2023

32. Henry Moore, *Reclining Figure: Festival*, 1949-1951 -  
[https://www.ribapix.com/images/thumbs/032/0323841\\_RIBA5122\\_600.jpeg](https://www.ribapix.com/images/thumbs/032/0323841_RIBA5122_600.jpeg), vyhledáno 30.7.2023
33. Barbara Hepworth, *Contrapuntal Forms*, 1949 -  
<https://www.barbarahepworth.org.uk/sculptures/images/Biog-5.jpg>, vyhledáno 30.7.2023
34. Richards Huws, *Watermobile Sculpture*, 1951 -  
<https://londontown54.files.wordpress.com/2015/12/john-bull-modern1-45-png.png>,  
vyhledáno 30.7.2023
35. Festival Pattern Group, vzor podle struktury afwillitu, 1951 -  
[https://coimages.sciencemuseumgroup.org.uk/images/7/841/medium\\_1976\\_0644\\_0025\\_0004\\_.jpg](https://coimages.sciencemuseumgroup.org.uk/images/7/841/medium_1976_0644_0025_0004_.jpg), vyhledáno 30.7.2023
36. Festival Pattern Group, límeček s krajkou podle struktury gibbsitu, 1951 -  
[https://coimages.sciencemuseumgroup.org.uk/images/7/835/medium\\_1976\\_0644\\_0021\\_0001\\_.jpg](https://coimages.sciencemuseumgroup.org.uk/images/7/835/medium_1976_0644_0021_0001_.jpg), vyhledáno 30.7.2023
37. John Piper a Osbert Lancaster, *Grand Vista* – pohled na počáteční prosklený baldachýn v pozadí, dále na věž s gotickými prvky, pyramidální kompozice, kolonádu a *Vista Tea House* v popředí, 1951 -  
[https://news.bbc.co.uk/media/images/46423000/jpg/\\_46423491\\_battpark27.jpg](https://news.bbc.co.uk/media/images/46423000/jpg/_46423491_battpark27.jpg),  
vyhledáno 30.7.2023
38. Cecil C. Handyside a D. Rogers Stark, kostel *Trinity Congregational Church, Lansbury, Poplar*, 1949-1951 - <https://www.jonmayphoto.com/img-get2/I0000dRvHK3yGpuA/fit=250x250/I0000dRvHK3yGpuA.jpg>, vyhledáno 30.7.2023
39. Frederic Gibberd, *Hodinová věž, Lansbury, Poplar*, 1949-1951 -  
[https://www.ribapix.com/images/thumbs/044/0444464\\_RIBA138520\\_600.jpeg](https://www.ribapix.com/images/thumbs/044/0444464_RIBA138520_600.jpeg),  
vyhledáno 30.7.2023
40. Robert Medley, *Bicyclists against a Blue Background*, 1951 -  
[https://d3d00swyhr67nd.cloudfront.net/w944h944/collection/NY/YAG/NY\\_YAG\\_YORAG\\_640-001.jpg](https://d3d00swyhr67nd.cloudfront.net/w944h944/collection/NY/YAG/NY_YAG_YORAG_640-001.jpg), vyhledáno 30.7.2023
41. Claude Rogers, *Miss Lynn*, 1951 -  
[https://d3d00swyhr67nd.cloudfront.net/w944h944/collection/HMPS/SCAG/HMPS\\_SCA G\\_1419-001.jpg](https://d3d00swyhr67nd.cloudfront.net/w944h944/collection/HMPS/SCAG/HMPS_SCA G_1419-001.jpg), vyhledáno 30.7.2023
42. Lucian Freud, *Interior Near Paddington*, 1951 -  
[http://images.artnet.com/images\\_us/magazine/features/kuspit/kuspit10-06-05-35.jpg](http://images.artnet.com/images_us/magazine/features/kuspit/kuspit10-06-05-35.jpg),  
vyhledáno 30.7.2023

43. Ivon Hitchens, *Aquarian Nativity – Child of His Age*, 1951 -  
[https://d3d00swyhr67nd.cloudfront.net/w1200h1200/collection/LDUCS/UCLAC/LDUCS\\_UCLAC\\_PC5274-001.jpg](https://d3d00swyhr67nd.cloudfront.net/w1200h1200/collection/LDUCS/UCLAC/LDUCS_UCLAC_PC5274-001.jpg), vyhledáno 30.7.2023
44. William Gear, *Autumn Landscape*, 1951 -  
[https://d3d00swyhr67nd.cloudfront.net/w1200h1200/collection/TWMS/LAG/TWMS\\_LAG\\_TWCMS\\_C10622b-001.jpg](https://d3d00swyhr67nd.cloudfront.net/w1200h1200/collection/TWMS/LAG/TWMS_LAG_TWCMS_C10622b-001.jpg), vyhledáno 30.7.2023
45. Expozice *Black Eyes and Lemonade*, 1951 - <https://www.croydonist.co.uk/wp-content/uploads/2021/03/croydonist-Black-Eyes-and-Lemonade-Bottle-1400px.jpg>, vyhledáno 30.7.2023
46. Expozice *Black Eyes and Lemonade* – reklamní předmět značky *Idris*, 1951 -  
[https://www.croydonist.co.uk/wp-content/uploads/2021/03/croydonist-WAG\\_PHOT\\_17\\_1-52\\_02-1400px.jpg](https://www.croydonist.co.uk/wp-content/uploads/2021/03/croydonist-WAG_PHOT_17_1-52_02-1400px.jpg), vyhledáno 30.7.2023
47. Ernest Race, židle *Antelope*, 1951 -  
[https://www.lovelyandco.co.uk/uploads/shop/300817/IMG\\_0199.jpg](https://www.lovelyandco.co.uk/uploads/shop/300817/IMG_0199.jpg), vyhledáno 30.7.2023
48. Charles Eames, židle *DCMI-1*, 1946 -  
<https://collectionapi.metmuseum.org/api/collection/v1/iiif/484642/1004711/restricted>, vyhledáno 30.7.2023
49. Institute of Contemporary Art, *Growth and Form*, 1951 -  
[https://miro.medium.com/v2/resize:fit:2560/1\\*1DjxHgCoIOLJ7VIF4JyQQ.jpeg](https://miro.medium.com/v2/resize:fit:2560/1*1DjxHgCoIOLJ7VIF4JyQQ.jpeg), vyhledáno 30.7.2023
50. Independent Group, *Parallel of Life and Art*, 1953 -  
[https://media.tate.org.uk/art/images/work/TGA/TGA-9211/TGA-9211-5-2-77-1\\_9.jpg](https://media.tate.org.uk/art/images/work/TGA/TGA-9211/TGA-9211-5-2-77-1_9.jpg), vyhledáno 30.7.2023
51. Independent Group, *This Is Tomorrow – Group Two*, 1956 - <https://smarthistory.org/wp-content/uploads/2021/12/robot-870x627.png>, vyhledáno 30.7.2023
52. Independent Group, *This Is Tomorrow – Group Six*, 1956 - <https://thomasgalvan.com/wp-content/uploads/2019/04/99b6f3f9cb6d2e21c3bcf5de03e98959-pavilion-art-gallery-300x216.jpg>, vyhledáno 30.7.2023
53. Independent Group, *This Is Tomorrow – Group Seven*, 1956 -  
[https://adrianflowersarchive.com/wp-content/uploads/2021/07/IMG\\_1242-1002x1024.jpg](https://adrianflowersarchive.com/wp-content/uploads/2021/07/IMG_1242-1002x1024.jpg), vyhledáno 30.7.2023

## Obrazové přílohy

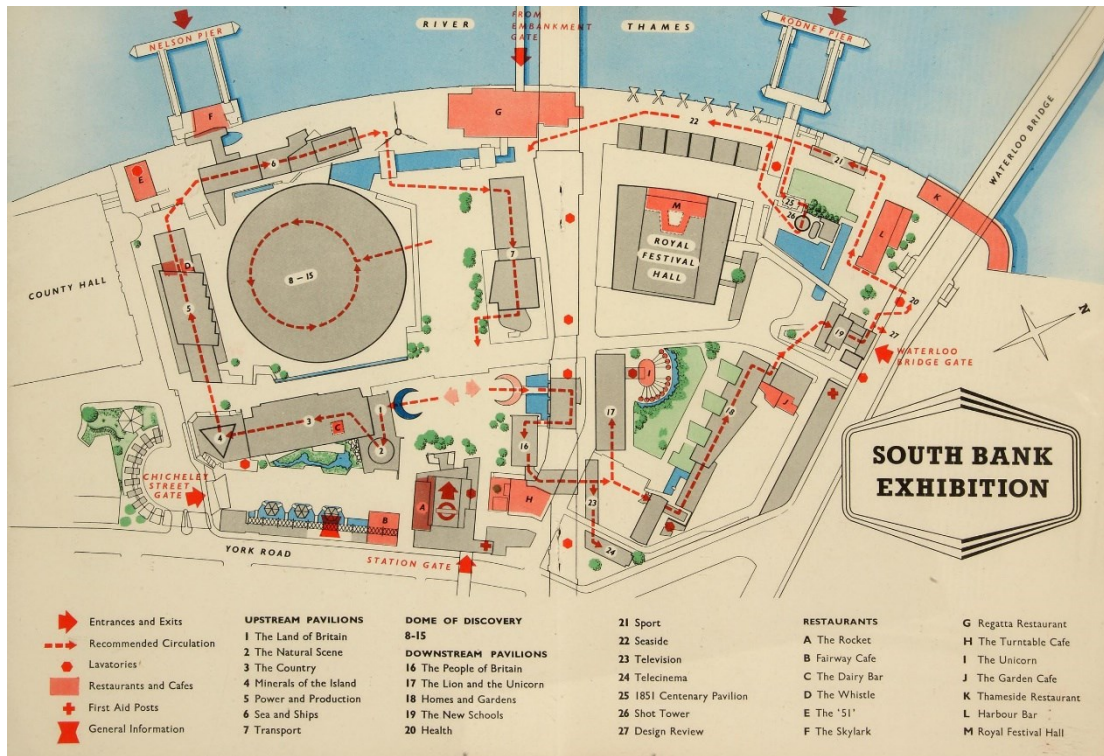


1. Ashley Havinden, návrh plakátu pro výstavu *Britain Can Make It*, 1946



2. Nábřeží *South Bank* s výstavištěm *Festival of Britain*, 1951





3. Plánek nábřeží *South Bank* s výstavištěm *Festival of Britain*, 1951



4. Pohled na počátek okruhu *The People* se srpovitým objektem H. T. Cadbury-Browna, 1951



5. Graham Sutherland, *The Origins of the Land*, 1951



6. Brian O'Rourke a Frederik Henrion, severní fasáda pavilonu *The Country*, 1951





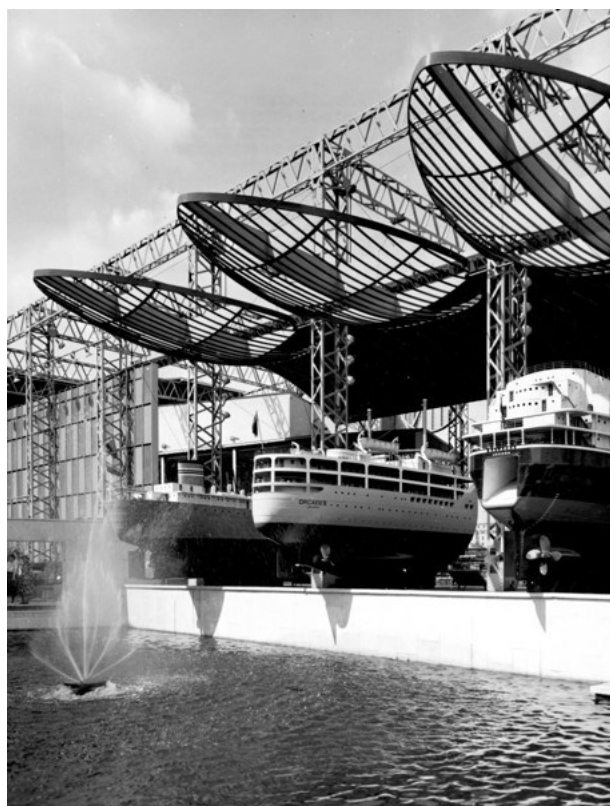
7. Michael O'Connell, tapisérie v pavilonu *The Country*, 1950-1951



8. Pavilon *Power and Production* s reliéfem *The Industries: Light, Heavy, Electricity* od Karla Vogela 1950-1951



9. *The 51 Bar* se sochou *Youth* od Daphne Hardy Henrion, 1951



10. Jižní strana pavilonu *Sea and Ships*, 1951



11. Siegfried Charoux, *The Islanders*, 1949-1951



12. Hidalgo Moya a Philip Powell, *Skylon*, 1951





13. Západní průčelí pavilonu *Transport*, 1951



14. Ralph Tubbs, *Dome of Discovery*, 1951



15. *Regatta Restaurant* se sochou Cypress Lynna Chadwicka, 1951

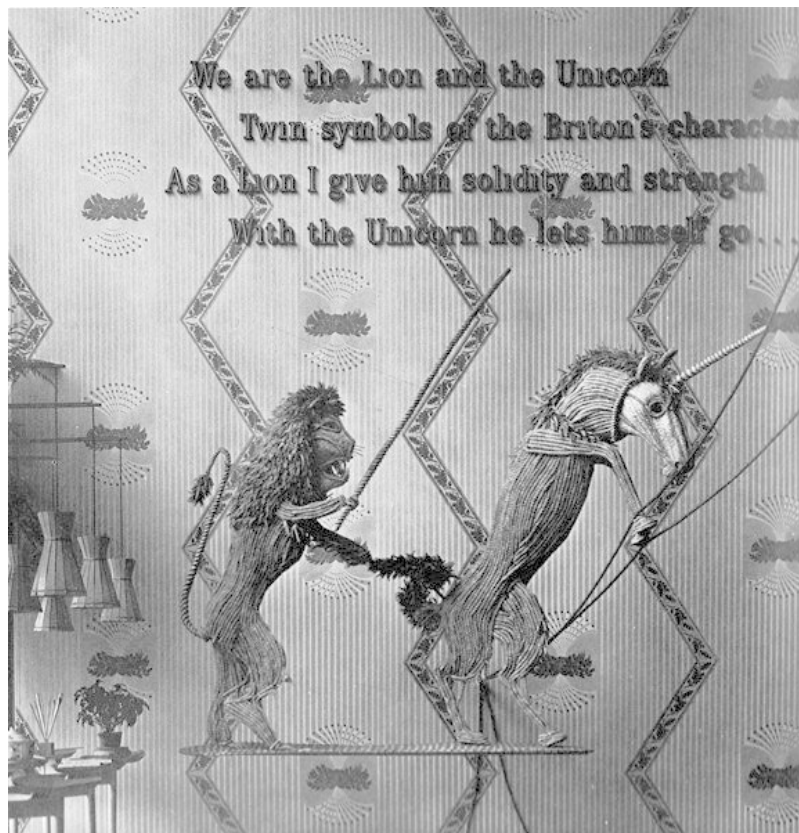


16. Wells Coates, *Telekinema*, 1951

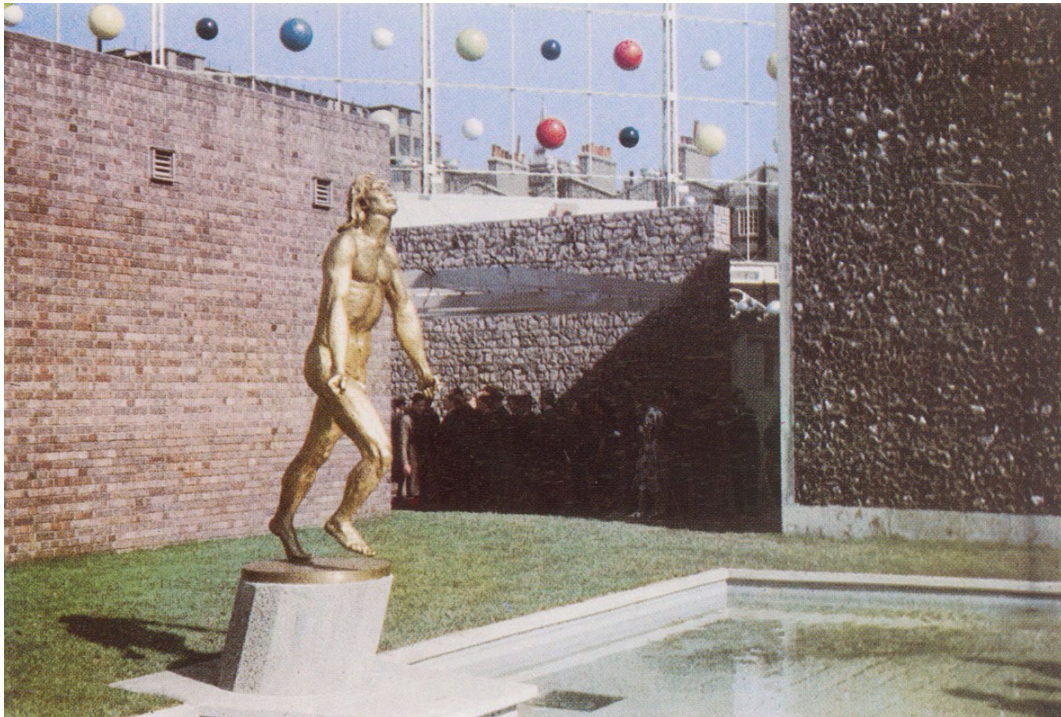




17. Richard Drew Russell a Robert Goodden, pavilon *The Lion and the Unicorn*, 1951



18. Fred Mizen, ratanové sochy lva a jednorožce v pavilonu *The Lion and the Unicorn*, 1951



19. Jacob Epstein, *Youth Advancing* před pavilonem *Homes and Gardens* s *Abacus Screen* od Edwarda Millse v pozadí, 1951



20. Západní fasáda pavilonu *Homes and Gardens* se sochou *Grace* od Johna Matthewse, 1951





21. John Piper, *The Englishman's Home* na severní fasádě *Homes and Gardens*, 1951



22. Vstupní hala pavilonu *Homes and Gardens* se sochou *Sisters* od Johna Matthewse, 1951



23. Fry and Drew, vstup *Waterloo Bridge Gate* s pavilony *The New Schools a Health*, 1951



24. Gordon a Ursula Bowyer, expozice *Sport*, 1951



25. Eric Brown a Peter Chamberlin, sekce *Seaside*, 1951

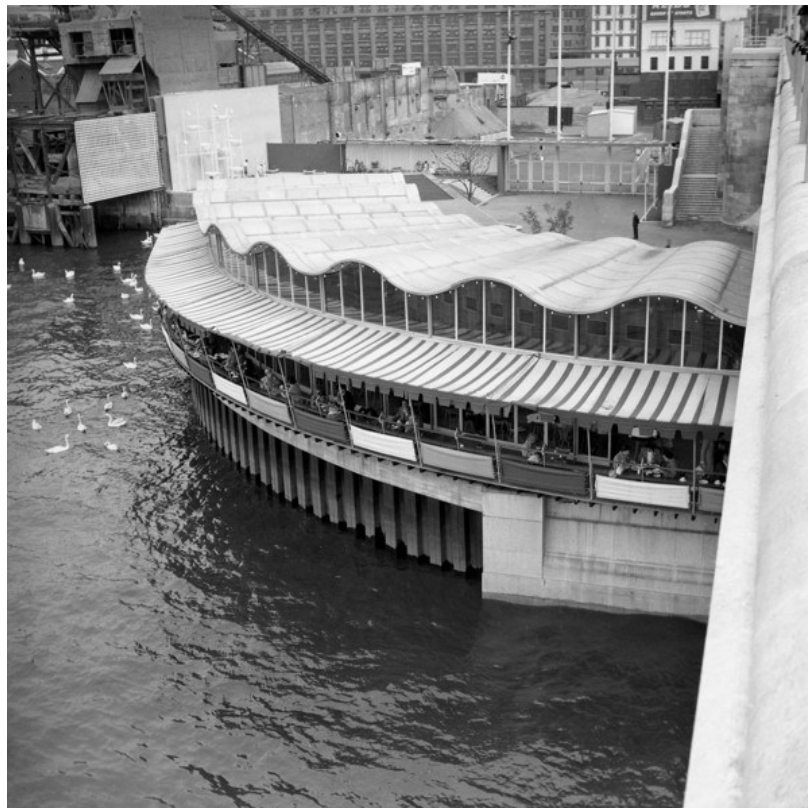


26. Robert Matthew, Leslie Martin a Peter Moro, severní průčelí *Royal Festival Hall*, 1951

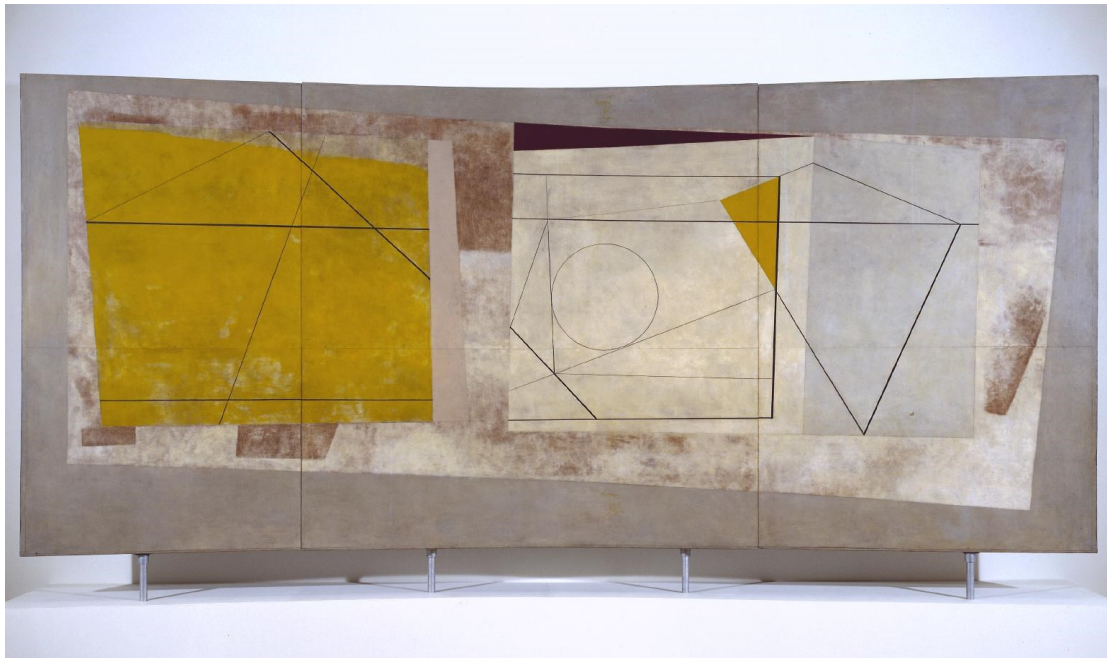




27. Robert Matthew, Leslie Martin a Peter Moro, jižní průčelí *Royal Festival Hall*, 1951



28. Fry and Drew, *Thameside Restaurant*, 1951



29. Ben Nicholson, malba pro *Thameside Restaurant* – bez názvu, 1951



30. Reg Butler, *Bird Cage*, 1950-1951



31. Barbara Hepworth, *Turning Forms*, 1950-1951



32. Henry Moore, *Reclining Figure: Festival*, 1949-1951



33. Barbara Hepworth, *Contrapuntal Forms*, 1949

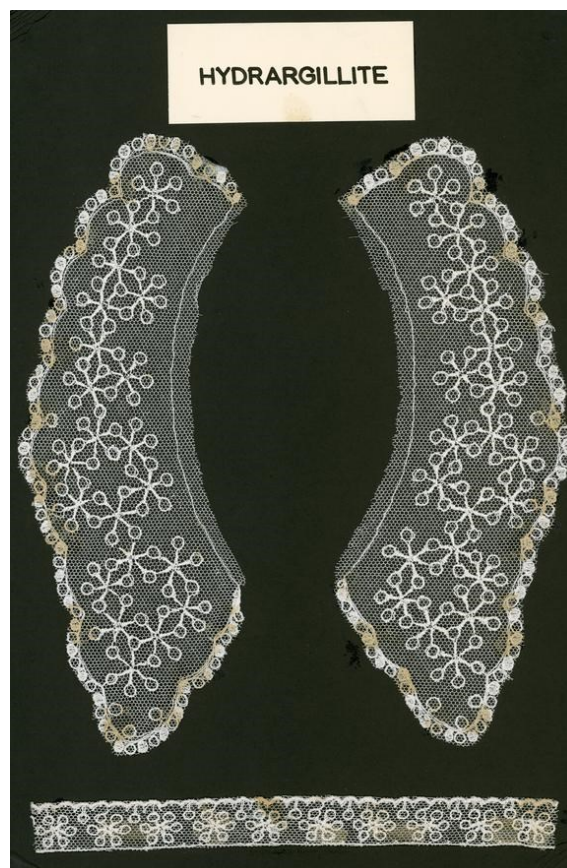


34. Richard Huws, *Watermobile Sculpture*, 1951



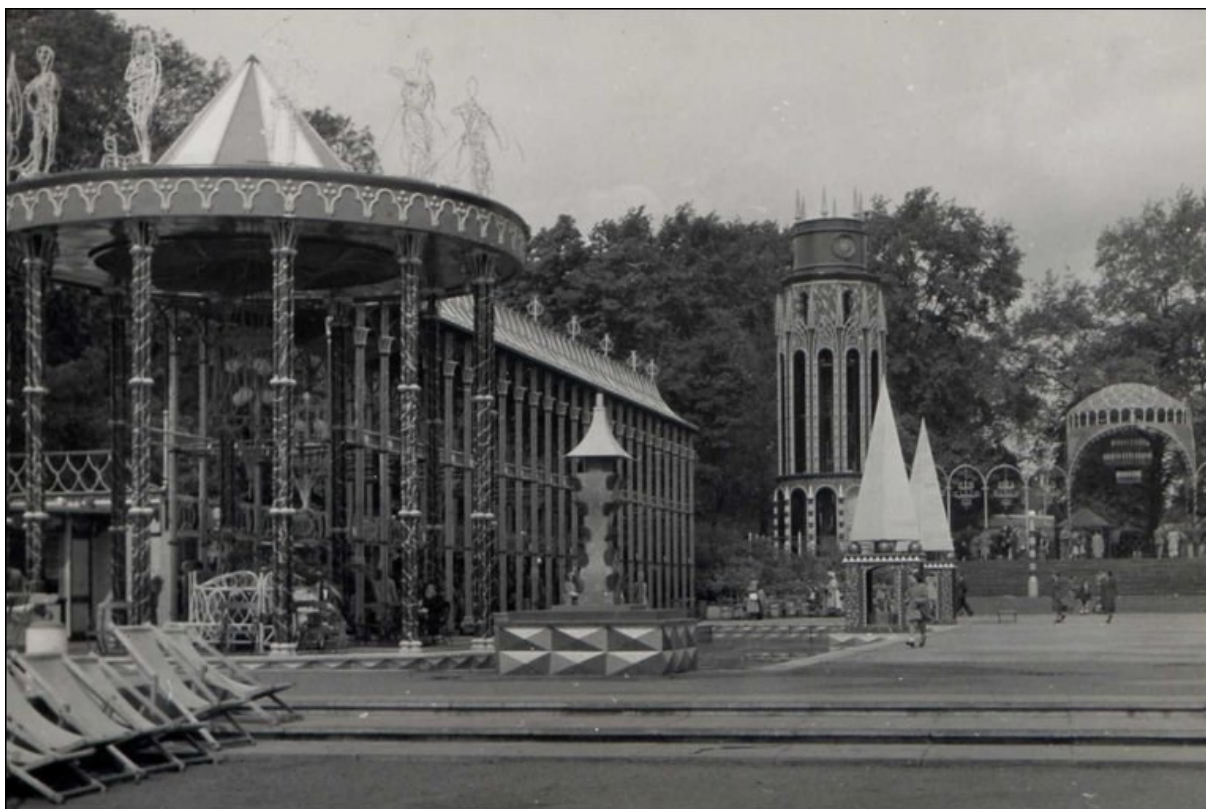


35. Festival Pattern Group, vzor podle struktury afwillitu, 1951



36. Festival Pattern Group, límeček s krajkou podle struktury gibbsitu, 1951





37. John Piper a Osbert Lancaster, *Grand Vista* – pohled na počáteční prosklený baldachýn v pozadí, dále na věž s gotickými prvky, pyramidální kompozice, kolonádu a kruhový *Vista Tea House* v popředí



38. Cecil C. Handyside a D. Rogers Stark, kostel *Trinity Congregational Church, Lansbury, Poplar, 1949-1951*



39. Frederic Gibberd, *Hodinová věž, Lansbury, Poplar*, 1949-1951



40. Robert Medley, *Bicyclists Against a Blue Background*, 1951





41. Claude Rogers, *Miss Lynn*, 1951



42. Lucian Freud, *Interior Near Paddington*, 1951



43. Ivon Hitchens, *Aquarian Nativity – Child of His Age*, 1951



44. William Gear, *Autumn Landscape*, 1951





45. Expozice *Black Eyes and Lemonade*, 1951



46. Expozice *Black Eyes and Lemonade* – reklamní předmět značky *Idris*, 1951

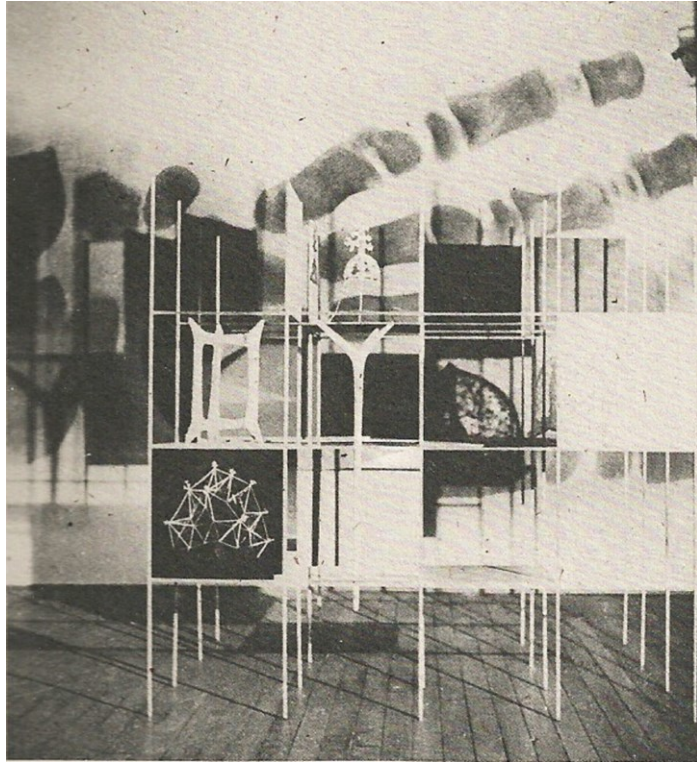




47. Ernest Race, *Antelope*, 1951



48. Charles Eames, *DCM-1*, 1946



49. Institute of Contemporary Art, *Growth and Form*, 1951



50. Independent Group, *Parallel of Life and Art*, 1953



51. Independent Group, *This Is Tomorrow – Group Two*, 1956



52. Independent Group, *This Is Tomorrow – Group Six*, 1956





53. Independent Group, *This Is Tomorrow – Group Seven*, 1956