

Charles University
Faculty of Science

Study programme:

Biology

Branch of study:

Immunology



Bc. Anna Zelenska

Effect of low-carbohydrate diet on development of type 1 diabetes and immune parameters in NOD mice

Vliv nízkosacharidové diety na vývoj diabetu prvního typu (T1D) a imunitních parametrů na modelu NOD myši

Diploma thesis

Supervisor:

MUDr. David Funda, Ph.D

Prague, 2024

Table of Contents

List of Abbreviations.....	8
2. Literature overview.....	9
2.1. T1D: intro.....	9
2.2. NOD mouse model.....	11
2.3. Viruses in T1D and generation of neoepitopes.....	12
2.4. Gut microbiome in T1D.....	14
2.5. Dietary factors in T1D.....	17
2.5.1. Low-carbohydrate diet in T1D.....	18
2.6. Regulatory and potentially immunoregulatory cell subsets in T1D.....	20
2.6.1. CD4+FoxP3+ Tregs.....	20
2.6.2. CD4+FoxP3-Tregs, Tr1 cells.....	21
2.6.3. $\gamma\delta$ T cells.....	22
2.7. Naive, effector and memory T cells in T1D	24
3. Thesis Aims.....	27
4. Materials and Methodology.....	28
4.1. Materials.....	28
4.1.1. Laboratory disposables.....	29
4.1.2. Solutions, buffers, antibodies.....	29
4.1.3. Laboratory equipment.....	30
4.2. Methods.....	31
4.2.1. T1D incidence.....	32
4.2.2. Isolation of mouse organs.....	34
4.2.3. Samples processing for flow cytometry.....	35
4.2.4. Insulitis scoring.....	36
4.3. Statistical analysis.....	36
5. Results.....	37

5.1. Effects of low-carbohydrate diet introduced to NOD mice from the age of 4 weeks	
5.1.1. T1D incidence in NOD mice.....	37
5.1.2. Immunological parameters of different T cell subsets in NOD mice exposed to LC diet from the age of 4 weeks.....	38
5.1.3. Insulinitis scoring in NOD mice exposed to LC diet from the age of 4 weeks.....	47
5.2. Effects of low-carbohydrate diet introduced to NOD mice from in utero.....	48
5.2.1. T1D incidence in NOD mice exposed to LC diet from in utero.....	48
5.2.2. Evaluating the percentages of T cell subsets in 12-weeks-old NOD mice exposed to LC diet from in utero.....	50
5.2.3. Insulinitis scoring in NOD mice exposed to LC diet from in utero.....	60
6. Discussion.....	61
7. Summary.....	65
8. References.....	66

2. Literature overview

2.5.1. Low-carbohydrate diet in T1D

P.19, line 5: “Thus, there is a need in larger, long-term ~~non~~-randomised controlled trials
- *long-term **randomised** controlled trials

2.7. Naive, effector and memory T cells in T1D

P.24, row 4: “observation that was made quite a long time ago is that islet-reactive
CD8+ and CD8+ T cells...” - *islet-reactive **CD4+** and CD8+ T cells

4. Materials and methods

P. 33, Fig.6; p. 34, Fig.7 - ***diabetes incidence was monitored from the age of 12 weeks**

4.2.4. Insulinitis scoring, p. 36 - ***Figure 8** (an update):

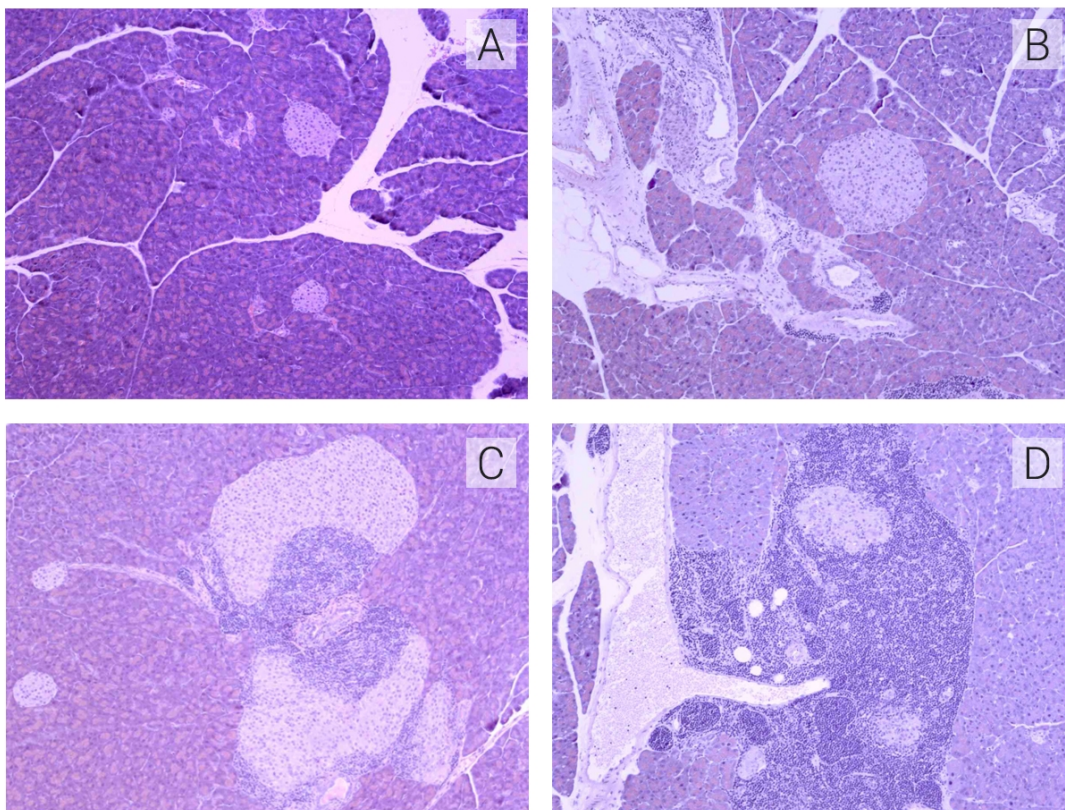


Fig. 8. Insulitis scoring. A) intact islet; B) periinsulitis; C) insulitis with < 50% of islet infiltration; D) insulitis with > 50% infiltration.

4.3. Statistical analysis

Missing sentence: *The cumulative diabetes incidence was assessed using the Kaplan-Meier estimation, and statistical significance between groups was evaluated by the Log-rank test and Chi-square test.

5. Results

5.2.1. T1D incidence in NOD mice exposed to LC diet from *in utero*

*p. 49, an update - a third graph with T1D incidence:

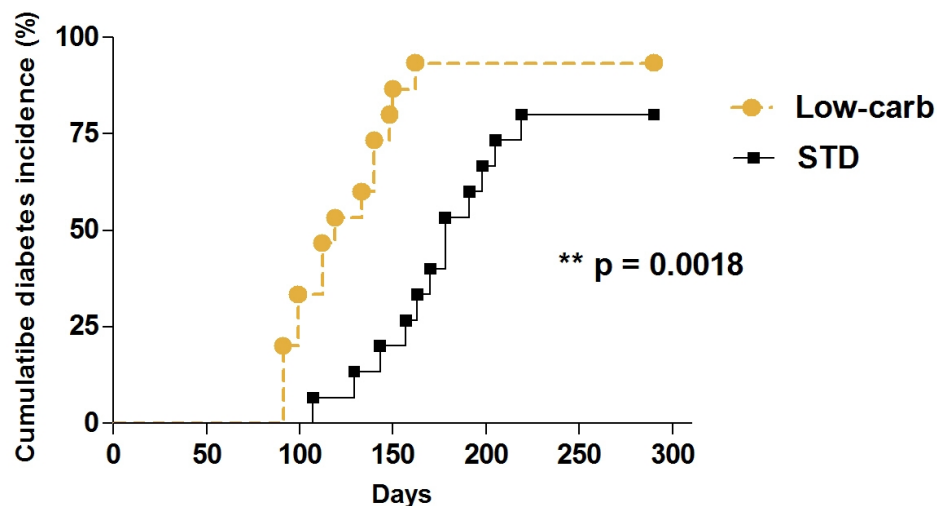


Fig. 23b. Effect of the low-carbohydrate diet introduced to pregnant females on diabetes incidence in F1 NOD female mice (up to the age of 290 days, n=15). Experiment 3 of 3.

6. Summary

(p. 65, paragraph 3, line 1):

“When investigating the effects of LC diet introduced to NOD females ~~since???~~ in utero...”, - correct: ***from** in utero - should be consistent throughout all the text

paragraph 3, line 5: “with a statistically significantly decreased CD4+IL-10+ T cells ,

Foxp3+ Tregs , Tr1 cells” - *with a statistically significantly decreased **proportions of** CD4+IL-10+ T cells , Foxp3+ Tregs , Tr1 cells

7. References

*incorrect numeration from the reference 40, the whole corrected list is below.

* - reviews

1. <https://diabetesatlas.org/idfawp/resource-files/2022/12/IDF-T1D-Index-Report.pdf>
2. *Zajec A, Trebušak Podkrajšek K, Tesovnik T, Šket R, Čugalj Kern B, et al. Pathogenesis of Type 1 Diabetes: Established Facts and New Insights. *Genes*. 2022; 13(4):706.
3. Chiou J, Geusz RJ, Okino ML, Han JY, Miller M, Melton R, et al. Interpreting type 1 diabetes risk with genetics and single-cell epigenomics. *Nature*. 2021 Jun; 594(7863):398-402.
4. Patterson CC, Harjutsalo V, Rosenbauer J, Neu A, Cinek O, Skrivarhaug T. Trends and cyclical variation in the incidence of childhood type 1 diabetes in 26 European centres in the 25 year period 1989–2013: a multicentre prospective registration study. *Diabetologia*. 2019;62(3):408–417.
5. Triolo TM, Fouts A, Pyle L, Yu L, Gottlieb PA, Steck AK. Type 1 Diabetes TrialNet Study Group. Identical and Nonidentical Twins: Risk and Factors Involved in Development of Islet Autoimmunity and Type 1 Diabetes. *Diabetes Care*. 2019 Feb;42(2):192-199.
6. *Haupt-Jorgensen M, Holm LJ, Josefsen K, Buschard K. Possible Prevention of Diabetes with a Gluten-Free Diet. *Nutrients*. 2018 Nov 13;10(11):1746.
7. *Houeiss P, Luce S, Boitard C. Environmental Triggering of Type 1 Diabetes Autoimmunity. *Front Endocrinol (Lausanne)*. 2022 Jul 22;13:933965.
8. Patterson CC, Dahlquist GG, Gyurus E, Green A, Soltesz G. Incidence trends for childhood type 1 diabetes in Europe during 1989–2003 and predicted new cases

2005–20: a multicentre prospective registration study. *Lancet*. 2009;373:2027–2033.

9. *Ogrotis I, Koufakis T, Kotsa K. Changes in the Global Epidemiology of Type 1 Diabetes in an Evolving Landscape of Environmental Factors: Causes, Challenges, and Opportunities. *Medicina*. 2023; 59(4):668.
10. Willcox A, Richardson SJ, Bone AJ, Foulis AK, Morgan NG. Analysis of islet inflammation in human type 1 diabetes. *Clin Exp Immunol*. 2009 Feb;155(2):173-81.
11. Michels AW, Landry LG, McDaniel KA, et al. Islet-Derived CD4 T Cells Targeting Proinsulin in Human Autoimmune Diabetes. *Diabetes*. 2017 Mar;66(3):722-734.
12. Gianani R, Campbell-Thompson M, Sarkar SA, et al. Dimorphic histopathology of long-standing childhood-onset diabetes. *Diabetol* 2010; 53: 690-698.
13. Babon JA, DeNicola ME, Blodgett DM, et al. Analysis of self-antigen specificity of islet-infiltrating T cells from human donors with type 1 diabetes. *Nat Med*. 2016 Dec;22(12):1482-1487.
14. Insel RA, Dunne JL, Atkinson MA, et al. Staging presymptomatic type 1 diabetes: a scientific statement of JDRF, the Endocrine Society, and the American Diabetes Association. *Diabetes Care*. 2015 Oct;38(10):1964-74.
15. Pietropaolo M, Towns R, Eisenbarth GS. Humoral Autoimmunity in Type 1 Diabetes: Prediction, Significance, and Detection of Distinct Disease Subtypes. *Cold Spring Harb Perspect Med* (2012) 2:10.
16. Coppieters KT, Dotta F, Amirian N, Campbell PD, Kay TW, Atkinson MA, et al. Demonstration of islet-autoreactive CD8 T cells in insulitic lesions from recent onset and long-term type 1 diabetes patients. *J Exp Med*. 2012 Jan 16;209(1):51-60.
17. *Pugliese A. Autoreactive T cells in type 1 diabetes. *J Clin Invest*. 2017 Aug 1;127(8):2881-2891.
18. *Pearson JA, Wong FS, Wen L. The importance of the Non Obese Diabetic (NOD) mouse model in autoimmune diabetes. *J Autoimmun*. 2016 Jan;66:76-88.

19. Bruggeman Y, Martens PJ, Sassi G, Viaene M, Wasserfall CH, Mathieu C, Gysemans C. Footprint of pancreas infiltrating and circulating immune cells throughout type 1 diabetes development. *Front Endocrinol (Lausanne)*. 2023 Nov 10;14:1275316.
20. Magnuson AM, Thurber GM, Kohler RH, Weissleder R, Mathis D, Benoist C. Population dynamics of islet-infiltrating cells in autoimmune diabetes. *Proc Natl Acad Sci U S A*. 2015 Feb 3;112(5):1511-6.
21. Catrina AM, Popa MA, Văcaru AM, Fenyó IM. Inflammatory status of the pancreas in NOD mice that do not develop overt diabetes. *Rom J Morphol Embryol*. 2021 Jan-Mar;62(1):109-115.
22. Aldrich VR, Hernandez-Rovira BB, Chandwani A, Abdulreda MH. NOD Mice- Good Model for T1D but Not Without Limitations. *Cell Transplant*. 2020 Jan-Dec;29:963689720939127.
23. *In't Veld P. Insulinitis in human type 1 diabetes: a comparison between patients and animal models. *Semin Immunopathol*. 2014 Sep;36(5):569-79.
24. *Mullen Y. Development of the Nonobese Diabetic Mouse and Contribution of Animal Models for Understanding Type 1 Diabetes. *Pancreas*. 2017 Apr;46(4):455-466.
25. Godoy GJ, Paira DA, Olivera C, Breser ML, Sanchez LR, Motrich RD, Rivero VE. Differences in T regulatory cells between mouse strains frequently used in immunological research: Treg cell quantities and subpopulations in NOD, B6 and BALB/c mice. *Immunol Lett*. 2020 Jul;223:17-25.
26. Gagnerault MC, Luan JJ, Lotton C, Lepault F. Pancreatic lymph nodes are required for priming of beta cell reactive T cells in NOD mice. *J Exp Med*. 2002 Aug 5;196(3):369-77.
27. *Chen D, Thayer TC, Wen L, Wong FS. Mouse Models of Autoimmune Diabetes: The Nonobese Diabetic (NOD) Mouse. *Methods Mol Biol*. 2020;2128:87-92.

28. Pearson JA, Tai N, Ekanayake-Alper DK, Peng J, Hu Y, Hager K, Compton S, et al. Norovirus Changes Susceptibility to Type 1 Diabetes by Altering Intestinal Microbiota and Immune Cell Functions. *Front Immunol*. 2019 Nov 12;10:2654.
29. Wen L, Ley RE, Volchkov PY, Stranges PB, Avanesyan L, Stonebraker AC, et al. Innate immunity and intestinal microbiota in the development of Type 1 diabetes. *Nature*. 2008 Oct 23;455(7216):1109-13.
30. Funda, PJ.; Fundova, P.; Harrison, LC. Proc 13th Int Congr Immunol. Vol. MS-11.4. Brazilian Society for Immunology; Rio de Janeiro: 2007. Microflora-dependency of selected diabetes-preventive diets: germ-free and ex-germ-free monocolonized NOD mice as models for studying environmental factors in type 1 diabetes.
31. Alam C, Bittoun E, Bhagwat D, et al. Effects of a germ-free environment on gut immune regulation and diabetes progression in non-obese diabetic (NOD) mice. *Diabetologia*. 2011 Jun;54(6):1398-406.
32. *Op de Beeck A, Eizirik DL. Viral infections in type 1 diabetes mellitus - why the β cells? *Nat Rev Endocrinol*. 2016 May;12(5):263-273.
33. Krogvold L., Edwin B., Buanes T., Frisk G., Skog O., Anagandula M., et al. Detection of a low-grade enteroviral infection in the islets of langerhans of living patients newly diagnosed with type 1 diabetes. *Diabetes*. 2015;64:1682–1687.
34. Richardson SJ, Rodriguez-Calvo T, Gerling IC, et al. Islet cell hyperexpression of HLA class I antigens: a defining feature in type 1 diabetes. *Diabetologia*. 2016 Nov;59(11):2448-2458.
35. Ferreira RC, Guo H, Coulson RM, Smyth DJ, Pekalski ML, Burren OS, et al. A Type I Interferon Transcriptional Signature Precedes Autoimmunity in Children Genetically at Risk for Type 1 Diabetes. *Diabetes* (2014) 63:2538–50.
36. *Yang S, Zhao B, Zhang Z, Dai X, Zhang Y, Cui L. Association between enterovirus infection and clinical type 1 diabetes mellitus: systematic review and meta-analysis of observational studies. *Epidemiol Infect*. 2021 Dec 10;150:e23.

37. *Yeung WC, Rawlinson WD, Craig ME. Enterovirus infection and type 1 diabetes mellitus: systematic review and meta-analysis of observational molecular studies. *BMJ*. 2011 Feb 3;342:d35.
38. Mannering SI, Di Carluccio AR, Elso CM. Neoepitopes: a new take on beta cell autoimmunity in type 1 diabetes. *Diabetologia*. 2019 Mar;62(3):351-356.
39. *Rodriguez-Calvo T, Johnson JD, Overbergh L, Dunne JL. Neoepitopes in Type 1 Diabetes: Etiological Insights, Biomarkers and Therapeutic Targets. *Front Immunol*. 2021 Apr 19;12:667989.
40. Murri M, Leiva I, Gomez-Zumaquero JM, Tinahones FJ, Cardona F, Soriguer F, et al. Gut microbiota in children with type 1 diabetes differs from that in healthy children: a case-control study. *BMC Med*. (2013) 11:46.
41. Giongo A, Gano KA, Crabb DB, Mukherjee N, Novelo LL, Casella G, et al. Toward defining the autoimmune microbiome for type 1 diabetes. *ISME J*. (2011) 5:82–91.
42. Leiva-Gea I, Sanchez-Alcoholado L, Martin-Tejedor B, Castellano-Castillo D, Moreno-Indias I, Urda-Cardona A, et al. Gut microbiota differs in composition and functionality between children with type 1 diabetes and MODY2 and healthy control subjects: a case-control study. *Diabetes Care*. (2018) 41:2385–95.
43. Demirci M, Bahar Tokman H, Taner Z, Keskin FE, Cagatay P, Ozturk Bakar Y, et al. Bacteroidetes and Firmicutes levels in gut microbiota and effects of hosts TLR2/TLR4 gene expression levels in adult type 1 diabetes patients in Istanbul, Turkey. *J Diabetes Complications*. (2019) 34:107449.
44. Davis-Richardson AG, Ardisson AN, Dias R, Simell V, Leonard MT, Kemppainen KM, et al. *Bacteroides dorei* dominates gut microbiome prior to autoimmunity in Finnish children at high risk for type 1 diabetes. *Front Microbiol*. 2014 Dec 10;5:678.
45. de Goffau MC, Luopajarvi K, Knip M, Ilonen J, Ruohtula T, Harkonen T, et al. Fecal microbiota composition differs between children with beta-cell autoimmunity and those without. *Diabetes*. (2013) 62:1238–44.

46. Kostic AD, Gevers D, Siljander H, Vatanen T, Hyotylainen T, Hamalainen AM, et al. The dynamics of the human infant gut microbiome in development and in progression toward type 1 diabetes. *Cell Host Microbe*. (2015) 17:260–73.
47. Kim CH. Microbiota or short-chain fatty acids: which regulates diabetes? *Cell Mol Immunol*. 2018 Feb;15(2):88-91.
48. Smith PM, Howitt MR, Panikov N, Michaud M, Gallini CA, Bohlooly-Y M, et al. The microbial metabolites, short-chain fatty acids, regulate colonic Treg cell homeostasis. *Science*. 2013 Aug 2;341(6145):569-73.
49. Park J, Kim M, Kang SG, Jannasch AH, Cooper B, Patterson J, Kim CH. Short-chain fatty acids induce both effector and regulatory T cells by suppression of histone deacetylases and regulation of the mTOR-S6K pathway. *Mucosal Immunol*. 2015 Jan;8(1):80-93.
50. Atarashi K, Tanoue T, Shima T, Imaoka A, Kuwahara T, Momose Y, et al. Induction of Colonic Regulatory T Cells by Indigenous Clostridium Species. *Science*. 2010
51. Atarashi K, Tanoue T, Oshima K, Suda W, Nagano Y, Nishikawa H, et al. Treg induction by a rationally selected mixture of Clostridia strains from the human microbiota. *Nature*. 2013;500:232–236.
52. Furusawa Y, Obata Y, Fukuda S, Endo TA, Nakato G, Takahashi D, et al. Commensal microbe-derived butyrate induces the differentiation of colonic regulatory T cells. *Nature*. 2013;504:446–450
53. Ivanov, Atarashi K, Manel N, Brodie EL, Shima T, Karaoz U, et al. Induction of intestinal Th17 cells by segmented filamentous bacteria. *Cell*. 2009;139:485–498.
54. Brown CT, Davis-Richardson AG, Giongo A, Gano KA, Crabb DB, Mukherjee N, et al. Gut microbiome metagenomics analysis suggests a functional model for the development of autoimmunity for type 1 diabetes. *PLoS ONE*. (2011) 6:e25792.
55. Zheng P, Li Z, Zhou Z. Gut microbiome in type 1 diabetes: A comprehensive review. *Diabetes Metab Res Rev*. 2018 Oct;34(7):e3043.

56. *Mejía-León ME, Barca AM. Diet, Microbiota and Immune System in Type 1 Diabetes Development and Evolution. *Nutrients*. 2015 Nov 6;7(11):9171-84.
57. *Tan J, Taitz J, Sun SM, Langford L, Ni D, Macia L. Your Regulatory T Cells Are What You Eat: How Diet and Gut Microbiota Affect Regulatory T Cell Development. *Front Nutr*. 2022 Apr 20;9:878382.
58. *Talmadge K., Philipson L., Reusch J., Hill-Briggs F., Youssef G., Bertha B., et al. American diabetes association standards of medical care in diabetes - 2018. *Diabetes Care*. 2018;41:S38–S50.
59. Clark AL, Yan Z, Chen SX, Shi V, Kulkarni DH, Diwan A, Remedi MS. High-fat diet prevents the development of autoimmune diabetes in NOD mice. *Diabetes Obes Metab*. 2021 Nov;23(11):2455-2465.
60. Funda DP, Kaas A, Bock T, Tlaskalová-Hogenová H, Buschard K. Gluten-free diet prevents diabetes in NOD mice. *Diabetes Metab Res Rev*. 1999 Sep-Oct;15(5):323-7.
61. Marietta E.V., Gomez A.M., Yeoman C., Tilahun A.Y., Clark C.R., Luckey D.H., et al. Low incidence of spontaneous type 1 diabetes in non-obese diabetic mice raised on gluten-free diets is associated with changes in the intestinal microbiome. *PLoS ONE*. 2013;8:e78687.
62. Funda DP, Kaas A, Tlaskalová-Hogenová H, Buschard K. Gluten-free but also gluten-enriched (gluten+) diet prevent diabetes in NOD mice; the gluten enigma in type 1 diabetes. *Diabetes Metab Res Rev*. 2008 Jan-Feb;24(1):59-63.
63. Hansen A.K., Ling F., Kaas A., Funda D.P., Farlov H., Buschard K. Diabetes preventive gluten-free diet decreases the number of caecal bacteria in non-obese diabetic mice. *Diabetes Metab. Res. Rev*. 2006;22:220–225.
64. Antvorskov J.C., Josefsen K., Haupt-Jorgensen M., Fundova P., Funda D.P., Buschard K. Gluten-Free Diet Only during Pregnancy Efficiently Prevents Diabetes in NOD Mouse Offspring. *J. Diabetes Res*. 2016;2016:3047574.
65. Haupt-Jorgensen M, Holm LJ, Josefsen K, Buschard K. Possible Prevention of Diabetes with a Gluten-Free Diet. *Nutrients*. 2018 Nov 13;10(11):1746.
66. Hansen CHF, Larsen CS, Zachariassen LF, Mentzel CMJ, Laigaard A, Krych L, et al. Gluten-free diet reduces autoimmune diabetes mellitus in mice across multiple

- generations in a microbiota-independent manner. *J Autoimmun.* 2022 Feb;127:102795.
67. Li X, Wang L, Meng G, Chen X, Yang S, Zhang M, et al. Sustained high glucose intake accelerates type 1 diabetes in NOD mice. *Front Endocrinol (Lausanne).* 2022 Dec 5;13:1037822.
68. *Bolla AM, Caretto A, Laurenzi A, Scavini M, Piemonti L. Low-Carb and Ketogenic Diets in Type 1 and Type 2 Diabetes. *Nutrients.* 2019 Apr 26;11(5):962.
69. *Lampousi AM, Carlsson S, Löfvenborg JE. Dietary factors and risk of islet autoimmunity and type 1 diabetes: a systematic review and meta-analysis. *EBioMedicine.* 2021 Oct;72:103633.
70. *Feinman R.D., Pogozelski W.K., Astrup A., Bernstein R.K., Fine E.J., Westman E.C., Accurso A., Frassetto L., Gower B.A., McFarlane S.I., et al. Dietary carbohydrate restriction as the first approach in diabetes management: Critical review and evidence base. *Nutrition.* 2015;31:1–13.
71. Turton JL, Brinkworth GD, Parker HM, Lim D, Lee K, et al. (2023) Effects of a low-carbohydrate diet in adults with type 1 diabetes management: A single arm non-randomised clinical trial. *PLOS ONE* 18(7): e0288440.
72. Krebs JD, Parry Strong A, Cresswell P, Reynolds AN, Hanna A, Haeusler S. A randomised trial of the feasibility of a low carbohydrate diet vs standard carbohydrate counting in adults with type 1 diabetes taking body weight into account. *Asia Pacific Journal of Clinical Nutrition.* 2016;25(1):78–84.
73. Nielsen JV, Gando C, Joensson E, Paulsson C. Low carbohydrate diet in type 1 diabetes, long-term improvement and adherence: A clinical audit. *Diabetology and Metabolic Syndrome.* 2012;4 (1) (23).
74. *Turton JL, Raab R, Rooney KB (2018) Low-carbohydrate diets for type 1 diabetes mellitus: A systematic review. *PLoS ONE* 13(3): e0194987.
75. Schuster C, Jonas F, Zhao F, Kissler S. Peripherally induced regulatory T cells contribute to the control of autoimmune diabetes in the NOD mouse model. *Eur J Immunol* 2018;48:1211–1216

76. *Hull CM, Peakman M, Tree TIM. Regulatory T cell dysfunction in type 1 diabetes: what's broken and how can we fix it? *Diabetologia*. 2017 Oct;60(10):1839-1850.
77. Feuerer M, Shen Y, Littman DR, Benoist C, Mathis D. How punctual ablation of regulatory T cells unleashes an autoimmune lesion within the pancreatic islets. *Immunity*. 2009 Oct 16;31(4):654-64. Epub 2009 Oct 8.
78. D'Alise AM, Auyeung V, Feuerer M, Nishio J, Fontenot J, Benoist C, et al. The defect in T-cell regulation in NOD mice is an effect on the T-cell effectors. *Proceedings of the National Academy of Sciences*. 2008 Dec 16;105(50):19857–62.
79. Tarbell KV, Petit L, Zuo X, Toy P, Luo X, Mqadmi A, Yang H, Suthanthiran M, Mojssov S, Steinman RM. Dendritic cell-expanded, islet-specific CD4+CD25+CD62L+ regulatory T cells restore normoglycemia in diabetic NOD mice. *J Exp Med*. 2007;204:191–201.
80. Viisanen T, Gazali AM, Ihantola EL, Ekman I, Näntö-Salonen K, Veijola R, et al. FOXP3+ Regulatory T Cell Compartment Is Altered in Children With Newly Diagnosed Type 1 Diabetes but Not in Autoantibody-Positive at-Risk Children. *Front Immunol*. 2019 Jan 22;10:19.
81. Ferreira RC, Simons HZ, Thompson WS, Rainbow DB, Yang X, Cutler AJ, et al. Cells with Treg-specific FOXP3 demethylation but low CD25 are prevalent in autoimmunity. *J Autoimmun*. (2017) 84:75–86.
82. Marwaha AK, Crome SQ, Panagiotopoulos C, Berg KB, Qin H, Ouyang Q, et al. Cutting edge: increased IL-17-secreting T cells in children with new-onset type 1 diabetes. *J Immunol*. (2010) 185:3814–8.
83. Sanda S, Roep BO, von Herrath M. Islet antigen specific IL-10+ immune responses but not CD4+CD25+FoxP3+ cells at diagnosis predict glycemic control in type 1 diabetes. *Clin Immunol*. 2008 May;127(2):138-43.
84. Ghonaim MM, El-Edel RH, Kamal Eldein SM, Abo El Fotoh WMM, Salman SS. T-Regulatory Cell Subsets in Children with Type 1 Diabetes Mellitus: Relation to Control of the Disease. *Endocr Metab Immune Disord Drug Targets*. 2017;17(3):238-245.

85. Ryba-Stanisławowska M, Rybarczyk-Kapturska K, Myśliwiec M, Myśliwska J. Elevated levels of serum IL-12 and IL-18 are associated with lower frequencies of CD4(+)CD25 (high)FOXP3 (+) regulatory t cells in young patients with type 1 diabetes. *Inflammation*. 2014 Oct;37(5):1513-20.
86. Szypowska A, Stelmaszczyk-Emmel A, Demkow U, Luczyński W. Low frequency of regulatory T cells in the peripheral blood of children with type 1 diabetes diagnosed under the age of five. *Arch Immunol Ther Exp (Warsz)*. 2012 Aug;60(4):307-13.
87. Hamari S, Kirveskoski T, Glumoff V, Kulmala P, Simell O, Knip M, et al. Analyses of regulatory CD4+ CD25+ FOXP3+ T cells and observations from peripheral T cell subpopulation markers during the development of type 1 diabetes in children. *Scand J Immunol*. (2016) 83:279–87.
88. McClymont SA, Putnam AL, Lee MR, Esensten JH, Liu W, Hulme MA, et al. Plasticity of human regulatory T cells in healthy subjects and patients with type 1 diabetes. *J Immunol*. (2011) 186:3918–26.
89. Brusko T, Wasserfall C, McGrail K, Schatz R, Viener HL, Schatz D, et al. No alterations in the frequency of FOXP3+ regulatory T-cells in type 1 diabetes. *Diabetes* (2007) 56:604–12.
90. Putnam AL, Vendrame F, Dotta F, Gottlieb PA. CD4+CD25high regulatory T cells in human autoimmune diabetes. *J Autoimmun*. (2005) 24:55–62.
91. Lindley S, Dayan CM, Bishop A, Roep BO, Peakman M, Tree TI. Defective suppressor function in CD4(+)CD25(+) T-cells from patients with type 1 diabetes. *Diabetes*. 2005 Jan;54(1):92-9.
92. Brusko TM, Wasserfall CH, Clare-Salzler MJ, Schatz DA, Atkinson MA. Functional defects and the influence of age on the frequency of CD4+ CD25+ T-cells in type 1 diabetes. *Diabetes*. 2005 May;54(5):1407-14.
93. Haseda F, Imagawa A, Murase-Mishiba Y, Terasaki J, Hanafusa T. CD4+ CD45RA⁻ FoxP3high activated regulatory T cells are functionally impaired and related to residual insulin-secreting capacity in patients with type 1 diabetes. *Clin Exp Immunol*. 2013 Aug;173(2):207-16.

94. Bakay M, Pandey R, Hakonarson H. Genes involved in type 1 diabetes: an update. *Genes (Basel)*. 2013 Sep 16;4(3):499-521.
95. Lawson JM, Tremble J, Dayan C, Beyan H, Leslie RD, Peakman M, Tree TI. Increased resistance to CD4+CD25hi regulatory T cell-mediated suppression in patients with type 1 diabetes. *Clin Exp Immunol*. 2008 Dec;154(3):353-9.
96. Glisic-Milosavljevic S, Waukau J, Jailwala P, Jana S, Khoo HJ, Albertz H, Woodliff J, et al. At-risk and recent-onset type 1 diabetic subjects have increased apoptosis in the CD4+CD25+ T-cell fraction. *PLoS One*. 2007 Jan 3;2(1):e146.
97. Glisic-Milosavljevic S, Wang T, Koppen M, Kramer J, Ehlenbach S, Waukau J, et al. Dynamic changes in CD4+ CD25+(high) T cell apoptosis after the diagnosis of type 1 diabetes. *Clin Exp Immunol*. 2007 Oct;150(1):75-82.
98. Marwaha AK, Crome SQ, Panagiotopoulos C, Berg KB, Qin H, Ouyang Q, et al. Cutting edge: Increased IL-17-secreting T cells in children with new-onset type 1 diabetes. *J Immunol*. 2010 Oct 1;185(7):3814-8.
99. McClymont SA, Putnam AL, Lee MR, Esensten JH, Liu W, Hulme MA, et al. Plasticity of human regulatory T cells in healthy subjects and patients with type 1 diabetes. *J Immunol*. 2011 Apr 1;186(7):3918-26.
100. Tang Q, Adams JY, Penaranda C, Melli K, Piaggio E, Sgouroudis E, et al. Central Role of Defective Interleukin-2 Production in the Triggering of Islet Autoimmune Destruction. *Immunity*. 2008 May 16;28(5):687-97.
101. Grinberg-Bleyer Y, Baeyens A, You S, Elhage R, Fourcade G, Gregoire S, et al. IL-2 reverses established type 1 diabetes in NOD mice by a local effect on pancreatic regulatory T cells. *J Exp Med*. 2010 Aug 30; 207(9):1871-8.
102. Pham MN, von Herrath MG, Vela JL. Antigen-Specific Regulatory T Cells and Low Dose of IL-2 in Treatment of Type 1 Diabetes. *Front Immunol*. 2016 Jan 11;6:651.
103. Todd JA, Evangelou M, Cutler AJ, Pekalski ML, Walker NM, et al. Regulatory T Cell Responses in Participants with Type 1 Diabetes after a Single Dose of Interleukin-2: A Non-Randomised, Open Label, Adaptive Dose-Finding Trial. *PLoS Med*. 2016 Oct 11;13(10):e1002139.

104. Schuster C, Jonas F, Zhao F, Kissler S. Peripherally induced regulatory T cells contribute to the control of autoimmune diabetes in the NOD mouse model. *Eur J Immunol.* 2018 Jul;48(7):1211-1216.
105. Arif S, Tree TI, Astill TP, et al. Autoreactive T cell responses show proinflammatory polarization in diabetes but a regulatory phenotype in health. *J Clin Invest.* 2004;113:451–463.
106. Arif S, Leete P, Nguyen V, Marks K, Nor NM, Estorninho M, et al. Blood and islet phenotypes indicate immunological heterogeneity in type 1 diabetes. *Diabetes.* 2014 Nov;63(11):3835-45.
107. Sanda S, Roep BO, von Herrath M. Islet antigen specific IL-10⁺ immune responses but not CD4⁺CD25⁺FoxP3⁺ cells at diagnosis predict glycemic control in type 1 diabetes. *Clin Immunol.* 2008;127:138–143.
108. *Roncarolo MG, Gregori S, Bacchetta R, Battaglia M. Tr1 cells and the counter-regulation of immunity: natural mechanisms and therapeutic applications. *Curr Opin Microbiol Immunol.* 2014;380:39–68.
109. Yu H, Gagliani N, Ishigame H, Huber S, Zhu S, Esplugues E, et al. Intestinal type 1 regulatory T cells migrate to periphery to suppress diabetogenic T cells and prevent diabetes development. *Proc Natl Acad Sci USA.* 2017 Sep 26;114(39):10443-10448.
110. Zubkiewicz-Kucharska A, Noczyńska A. Abnormal Distribution of Gamma-Delta T Lymphocytes and Their Subsets in Type 1 Diabetes. *Adv Clin Exp Med.* 2016 Jul-Aug;25(4):665-71.
111. Zhang L, Jin N, Nakayama M, O'Brien RL, Eisenbarth GS, Born WK. Gamma delta T cell receptors confer autonomous responsiveness to the insulin-peptide B:9-23. *J Autoimmun.* 2010 Jun;34(4):478-84.
112. Aydintug M, Zhang L, Wang C, Liang D, Wands JM, Michels A, et al. $\gamma\delta$ T cells recognize the insulin B:9–23 peptide antigen when it is dimerized through thiol oxidation. *Molecular Immunology.* 2014 Aug 1;60:116–28.

113. Locke NR, Stankovic S, Funda DP, Harrison LC. TCR gamma delta intraepithelial lymphocytes are required for self-tolerance. *J Immunol.* 2006 Jun 1;176(11):6553-9.
114. O'Brien RL, Matsuda J, Aydintug MK, Jin N, Phalke S, Born WK. A Distinctive $\gamma\delta$ T Cell Repertoire in NOD Mice Weakens Immune Regulation and Favors Diabetic Disease. *Biomolecules.* 2022 Oct 1;12(10):1406.
115. Han G, Wang R, Chen G, Wang J, Xu R, Wang L, Feng J, Li X, Guo R, Fu L, Shen B, Li Y. Interleukin-17-producing gammadelta+ T cells protect NOD mice from type 1 diabetes through a mechanism involving transforming growth factor-beta. *Immunology.* 2010;129:197-206.
116. Markle JG, Mortin-Toth S, Wong AS, Geng L, Hayday A, Danska JS. $\gamma\delta$ T cells are essential effectors of type 1 diabetes in the nonobese diabetic mouse model. *J Immunol.* 2013 Jun 1;190(11):5392-401.
117. Ehlers, M.R., Rigby, M.R. Targeting Memory T Cells in Type 1 Diabetes. *Curr Diab Rep* 15, 84 (2015).
118. Chee J, Ko HJ, Skowera A, Jhala G, Catterall T, Graham KL, et al. Effector-memory T cells develop in islets and report islet pathology in type 1 diabetes. *J Immunol.* 2014 Jan 15;192(2):572-80.
119. Wiedeman AE, Speake C, Long SA. The many faces of islet antigen-specific CD8 T cells: clues to clinical outcome in type 1 diabetes. *Immunol Cell Biol.* 2021 May;99(5):475-485.
120. Hanna SJ, Powell WE, Long AE, Robinson EJS, Davies J, Megson C, et al. Slow progressors to type 1 diabetes lose islet autoantibodies over time, have few islet antigen-specific CD8+ T cells and exhibit a distinct CD95hiB cell phenotype. *Diabetologia* 2020 Jun; 63(6): 1174-1185.
121. Yeo L, Woodwyk A, Sood S, Lorenc A, Eichmann M, Pujol-Autonell I, et al. Autoreactive T effector memory differentiation mirrors β cell function in type 1 diabetes. *J Clin Invest.* 2018 Aug 1;128(8):3460-3474.

122. Gearty SV, Dündar F, Zumbo P, Espinosa-Carrasco G, Shakiba M, Sanchez-Rivera FJ, et al. An autoimmune stem-like CD8 T cell population drives type 1 diabetes. *Nature*. 2022 Feb;602(7895):156-161.
123. Vignali D, Cantarelli E, Bordignon C, Canu A, Citro A, Annoni A, et al. Detection and Characterization of CD8+ Autoreactive Memory Stem T Cells in Patients With Type 1 Diabetes. *Diabetes*. 2018 May;67(5):936-945.
124. *Cheru N, Hafler DA, Sumida TS. Regulatory T cells in peripheral tissue tolerance and diseases. *Front Immunol*. 2023 May 1;14:1154575.
125. Simon MC, Reinbeck AL, Wessel C, Heindirk J, Jelenik T, Kaul K, et al. Distinct alterations of gut morphology and microbiota characterize accelerated diabetes onset in nonobese diabetic mice. *J Biol Chem*. 2020 Jan 24;295(4):969-980.
126. Livanos AE, Greiner TU, Vangay P, Pathmasiri W, Stewart D, McRitchie S, et al. Antibiotic-mediated gut microbiome perturbation accelerates development of type 1 diabetes in mice. *Nat Microbiol*. 2016 Aug 22;1(11):16140.
127. Ostman S, Rask C, Wold AE, Hultkrantz S, Telemo E. Impaired regulatory T cell function in germ-free mice. *Eur J Immunol*. 2006 Sep;36(9):2336-46.
128. Lyte JM, Proctor A, Phillips GJ, Lyte M, Wannemuehler M. Altered Schaedler flora mice: A defined microbiota animal model to study the microbiota-gut-brain axis. *Behav Brain Res*. 2019 Jan 1;356:221-226.
129. Guillen J. FELASA guidelines and recommendations. *J Am Assoc Lab Anim Sci*. 2012 May;51(3):311-21.
130. Pfefferle PI, Keber CU, Cohen RM, Garn H. The Hygiene Hypothesis - Learning From but Not Living in the Past. *Front Immunol*. 2021 Mar 16;12:635935.
131. *Tan J, Taitz J, Sun SM, Langford L, Ni D, Macia L. Your Regulatory T Cells Are What You Eat: How Diet and Gut Microbiota Affect Regulatory T Cell Development. *Front Nutr*. 2022 Apr 20;9:878382.
132. Smith PM, Howitt MR, Panikov N, Michaud M, Gallini CA, Bohlooly-Y M, et al. The microbial metabolites, short-chain fatty acids, regulate colonic Treg cell homeostasis. *Science*. 2013 Aug 2;341(6145):569-73.

133. Bihan DG, Rydzak T, Wyss M, Pittman K, McCoy KD, Lewis IA. Method for absolute quantification of short chain fatty acids via reverse phase chromatography mass spectrometry. *PLoS One*. 2022 Apr 20;17(4):e0267093.
134. Zhou H, Sun L, Zhang S, Zhao X, Gang X, Wang G. Evaluating the Causal Role of Gut Microbiota in Type 1 Diabetes and Its Possible Pathogenic Mechanisms. *Front Endocrinol (Lausanne)*. 2020 Mar 24;11:125.
135. Castro-Alves V, Orešič M, Hyötyläinen T. Lipidomics in nutrition research. *Curr Opin Clin Nutr Metab Care*. 2022 Sep 1;25(5):311-318.
136. Jacob N., Jaiswal S., Maheshwari D., Nallabelli N, Khatri N, Bhatia A, et al. Butyrate induced Tregs are capable of migration from the GALT to the pancreas to restore immunological tolerance during type-1 diabetes. *Sci Rep*. 2020 Nov 5;10(1):19120.
137. Clark AL, Yan Z, Chen SX, Shi V, Kulkarni DH, Diwan A, Remedi MS. High-fat diet prevents the development of autoimmune diabetes in NOD mice. *Diabetes Obes Metab*. 2021 Nov;23(11):2455-2465.
138. Jaakkola I, Jalkanen S, Hänninen A. Diabetogenic T cells are primed both in pancreatic and gut-associated lymph nodes in NOD mice. *Eur J Immunol* (2003) 33:3255-64.
139. Gagnerault MC, Luan JJ, Lotton C, Lepault F. Pancreatic lymph nodes are required for priming of beta cell reactive T cells in NOD mice. *J Exp Med* (2002) 196:369-77.
140. Clare-Salzler MJ, Brooks J, Chai A, van Herle K, Anderson C. Prevention of diabetes in nonobese diabetic mice by dendritic cell transfer. *J Clin Invest* (1992) 90:741-8.
141. Hansen CH, Krych L, Buschard K, Metzdorff SB, Nellemann C, Hansen LH, et al. A maternal gluten-free diet reduces inflammation and diabetes incidence in the offspring of NOD mice. *Diabetes*. 2014 Aug;63(8):2821-32.
142. Harrison LC, Dempsey-Collier M, Kramer DR, Takahashi K. Aerosol insulin induces regulatory CD8 gamma delta T cells that prevent murine insulin-dependent diabetes. *J Exp Med* (1996) 184: 2167–2174.

143. Gearty SV, Dündar F, Zumbo P, Espinosa-Carrasco G, Shakiba M, Sanchez-Rivera FJ, et al. An autoimmune stem-like CD8 T cell population drives type 1 diabetes. *Nature*. 2022 Feb;602(7895):156-161.