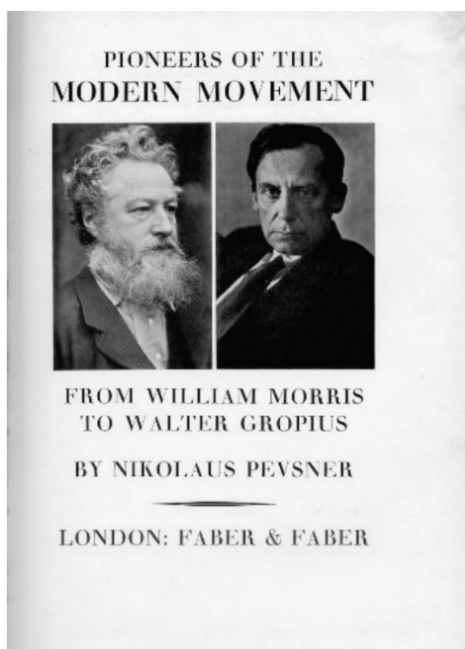


## Obrazová příloha



1. Nikolaus Pevsner, *Pioneers of the Modern Movement*, 1936

Kondo Ariyuki, To Design Well is a Moral Duty: Nicolaus Pevsner's Modern-Medievalist Appeal, In: *The Japanese Society for Aesthetics*, č. 20, 2016, s. 76



2. *Katedrála Ježíše Krista*, Gilbert Scott, Liverpool, 1904–1978

[https://en.wikipedia.org/wiki/Giles\\_Gilbert\\_Scott#/media/File:Anglican\\_Cathedral\\_Liverpool\\_2\\_\(6730011723\).jpg](https://en.wikipedia.org/wiki/Giles_Gilbert_Scott#/media/File:Anglican_Cathedral_Liverpool_2_(6730011723).jpg)



3. Radnice, Ragnar Östberg, Stockholm, 1911

[https://upload.wikimedia.org/wikipedia/commons/e/e6/Stockholms\\_stadshus\\_september\\_2011.jpg](https://upload.wikimedia.org/wikipedia/commons/e/e6/Stockholms_stadshus_september_2011.jpg), autor: Arild Vågen, vyhledáno 25.7. 2024



4. Radnice, Wilem Dudok, Hilversum, 1931

<https://www.archiweb.cz/b/mestska-radnice-hilversum>, autor: Petr Šmídek



5. *Dean Bridge*, Edinburgh, 1831

<https://britishlistedbuildings.co.uk/200365312-dean-bridge-edinburgh-edinburgh/photos/251902>, vyhledáno 25.7. 2024



6. *Melvillův pomník*, Edinburgh, 1821–1827

<https://www.bbc.com/news/uk-scotland-edinburgh-east-fife-64823151>, vyhledáno 25.7. 2024



7. Silo, Leith, Edinburgh, 1933

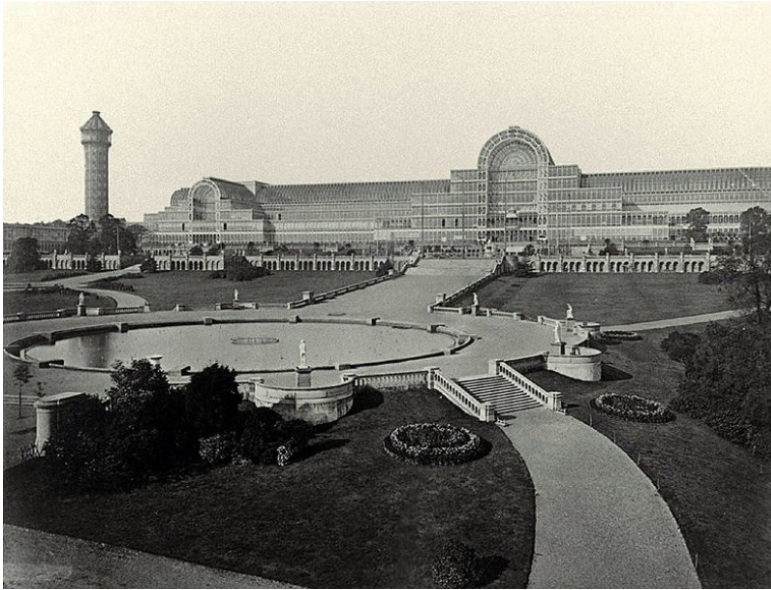
<https://www.leithforever.org/100days/day93>, vyhledáno 25.7. 2024



8. *Dům kultury a oddechu*, Alexander Gegello, Leningrad, 1927

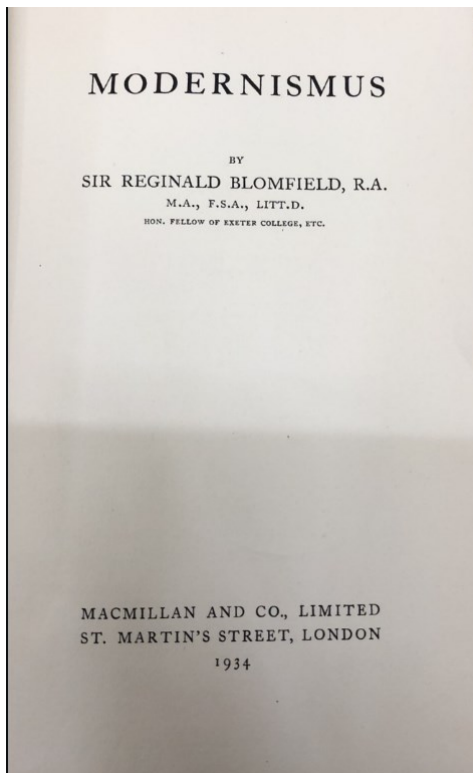
[https://www.reddit.com/r/ConstructivismArt/comments/13geijb/palace\\_of\\_culture\\_named\\_after\\_gorky\\_1927\\_saint/#lightbox](https://www.reddit.com/r/ConstructivismArt/comments/13geijb/palace_of_culture_named_after_gorky_1927_saint/#lightbox), vyhledáno 30.7.2024





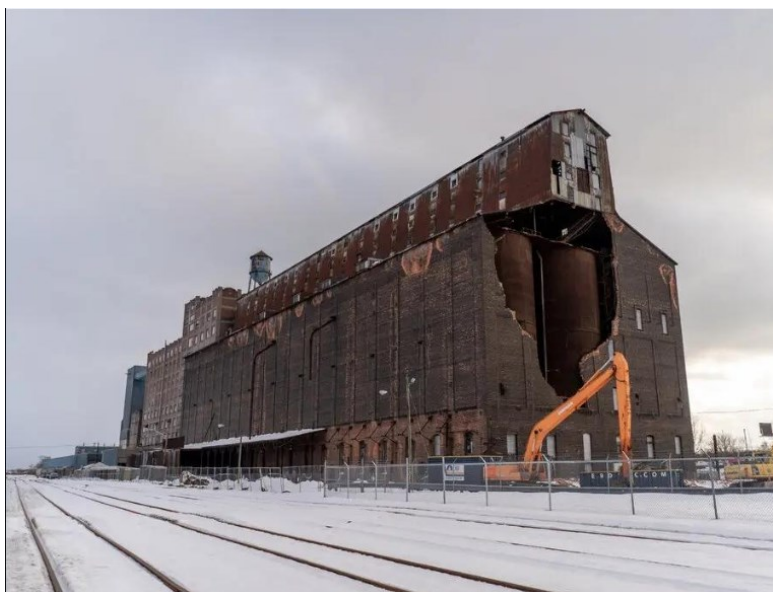
9. *Cristal Palace*, Joseph Paxton, Londýn, 1851

[https://www.archdaily.com/397949/ad-classic-the-crystal-palace-joseph-paxton,](https://www.archdaily.com/397949/ad-classic-the-crystal-palace-joseph-paxton) vyhledáno  
25.7. 2024



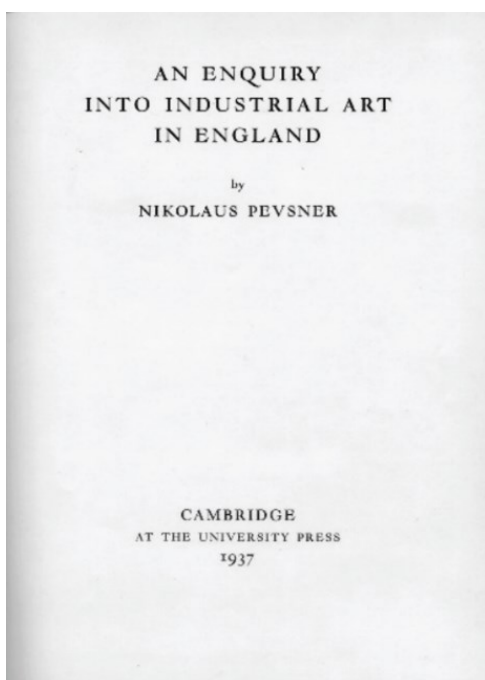
10. *Modernismus*, Reginald Blomfield, 1934

Foto: archiv autora



11. Silo (*Great Northern Elevator*), Buffalo USA, 1897

<https://www.nytimes.com/2022/01/22/nyregion/buffalo-grain-elevator.html>, vyhledáno 25.7. 2024



12. *An Enquiry into Industrial Art*, Nikolaus Pevsner, 1937

Kondo Ariyuki, To Design Well is a Moral Duty: Nikolaus Pevsner's Modern-Medievalist Appeal, In: *The Japanese Society for Aesthetics*, č. 20, 2016, s. 80.



13. *Salon Finella*, Londýn, Raymond McGarth, Mansfield Forbes, 1929

<https://www.ribapix.com/search?adv=false&cid=0&mid=0&vid=0&q=finella&sid=false&isc=true&orderBy=0>, vyhledáno 25.7. 2024



14. *Salon Finella*, Londýn, Raymond McGarth, Mansfield Forbes, 1929

<https://www.ribapix.com/search?adv=false&cid=0&mid=0&vid=0&q=finella&sid=false&isc=true&orderBy=0>, vyhledáno 25.7. 2024



15. *Salon Finella*, Londýn, Raymond McGarth, Mansfield Forbes, 1929

<https://www.ribapix.com/search?adv=false&cid=0&mid=0&vid=0&q=finella&sid=false&isc=true&orderBy=0>, vyhledáno 25.7. 2024



16. *The Hopfield*, Colin Lucas, Wrotham, Kent, 1931

<https://www.modernism-in-metroland.co.uk/blog/a-man-for-all-seasons-the-career-of-colin-lucas>, vyhledáno 25.7. 2024





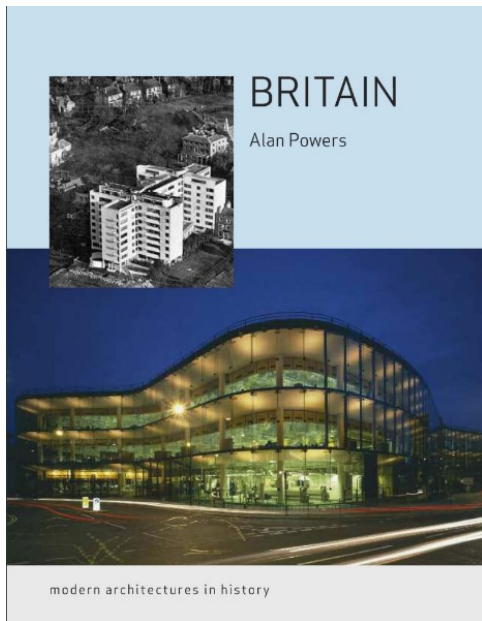
17. *25 Avenue de Versailles*, Berthold Lubetkin, Paříž, 1928–1931

<https://www.ribaj.com/culture/parting-shot-avenue-de-versailles-paris-berthold-lubetkin-jean-ginsberg>, vyhledáno 25.7. 2024



18. *De la Warrův pavilon*, Erich Mendelsohn, Bexhill on Sea, 1935

<https://www.mcaslan.co.uk/work/de-la-warr-pavilion>, vyhledáno 25.7. 2024



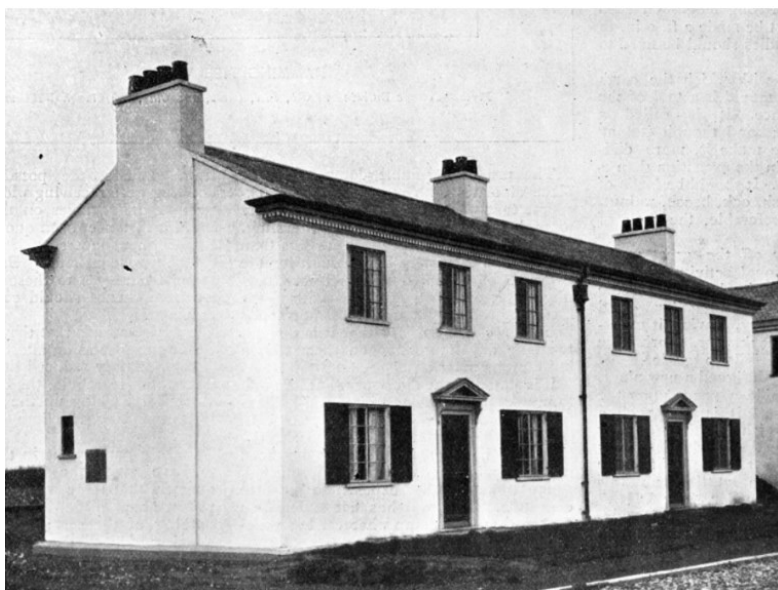
19. *Britain: Modern Architectures in History*, Alan Powers, 2007

<https://press.uchicago.edu/ucp/books/book/distributed/B/bo4234912.html>, vyhledáno 25.7. 2024



20. *King Edward Building*, Henry Tanner, Londýn, 1907

<https://blog.quintinlake.com/2010/10/23/king-edward-buildings-former-general-post-office-headquarters-now-bank-of-america-merrill-lynch-london-headquarters/>, vyhledáno 25.7. 2024



21. Domy *Dorlonco*, Dormanstown, 1919

<https://www.ribapix.com/search?adv=false&cid=0&mid=0&vid=0&q=Dorlonco&sid=false&isc=true&orderBy=0>, vyhledáno 25.7. 2024



22. Domy v Silver End, Sir John Burnet and Partners, Essex, 1926–32

<https://www.pow-architects.com/silver-end-essex-housing?lightbox=dataItem-ltn4998w>, vyhledáno 25.7. 2024





23. *High and Over*, Amyas Connell, Amersham, Buckinghamshire, 1929–31

<https://amershammuseum.org/history/on-the-hill/high-over/>, vyhledáno 27.7. 2024



24. *New Ways House*, Ludwig Mies van der Rohe, Northampton, Northamptonshire, 1926

<https://www.wowhaus.co.uk/wp-content/uploads/n1-14.jpg>, vyhledáno 27.7. 2024